

NOTICE

ALL THE IMAGES IN THIS BOOK HAVE UNDERGONE EDITING, MANIPULATION, AND ARTIFICIAL GENERATION TO PREVENT ANY POTENTIAL COPYRIGHT CLAIMS. EACH IMAGE WITHIN THE BOOK HAS BEEN TRANSFORMED AND IS NOW CATEGORIZED AS 'ARTWORK,' FALLING UNDER THE COPYRIGHT OF THE AUTHOR OF THE BOOK OF WISDOM. NONE OF THE IMAGES FEATURED IN THIS BOOK ARE PRESENTED IN THEIR ORIGINAL FORM.

INTRODUCTION

THE BOOK OF WISDOM SERVES AS A RESERVOIR OF ESOTERICISM, OCCULTISM, SYMBOLISM, AND, MOST NOTABLY, SYNCRETISM. SYNCRETISM, THE METHOD EMPLOYED BY ME, THE REVIVAL OF WISDOM, ACTS AS THE UNIFYING FORCE THAT MERGES ALL FIELDS OF KNOWLEDGE. IT WEAVES TOGETHER EVERY SUBJECT OF MATTER INTO A SINGULAR HOLY SCIENCE. IN RECOGNIZING THAT ALL THINGS ORIGINATE FROM THE ONE, THE BOOK ASSERTS THAT EVERYTHING IS FUNDAMENTALLY INTERCONNECTED. OUR WORLDLY EXISTENCE UNFOLDS WITHIN A FRACTIONAL REALM WHERE EVERY ENTITY ENCAPSULATES THE ENTIRETY OF EXISTENCE FROM BOTH MICROSCOPIC AND MACROSCOPIC PERSPECTIVES.

IN THE CONTEMPORARY ERA, THE AVERAGE INDIVIDUAL PREDOMINANTLY OPERATES WITH A LEFT HEMISPHERE-DOMINANT MINDSET. THE LEFT HEMISPHERE OF THE BRAIN DISSECTS AND DISENTANGLES THE UNIFIED PERCEPTION OF REALITY FROM THE RIGHT HEMISPHERE INTO DISCRETE FRAGMENTS, ENABLING A LOGICAL MANIPULATION AND UNDERSTANDING OF PHENOMENA. TO FULLY GRASP THE INSIGHTS PRESENTED IN THIS BOOK, ONE MUST EMANCIPATE THEIR MIND FROM THE INDOCTRINATION IMPOSED BY EDUCATIONAL SYSTEMS AND, SECONDLY, STRIVE TO PERCEIVE REALITY AS AN INDIVISIBLE AND HOLISTIC CREATION.

LIGHT

GENESIS 1:3 "LET THERE BE LIGHT" WE LIVE INSIDE OF A LIGHTWAVE UNIVERSE WHERE ALL THINGS ARE CREATED OUT OF LIGHT. LOW-VIBRATING LIGHT TURNS INTO MATTER, HIGH-VIBRATING MATTER TURNS BACK INTO LIGHT. UNIVERSAL ONE BY WALTER RUSSEL: "GOD IS THINKING MIND. THE SUBSTANCE OR BODY OF GOD IS LIGHT". "THE ONE UNIVERSAL SUBSTANCE, A THINKING SUBSTANCE, COMPREHENSIVE AND DESCRIBABLE AND POSSESSED OF PRINCIPLES WHICH ARE FAMILIAR TO MAN THROUGH MANS OBSERVATION OF THE ONE UNIVERSAL SUBSTANCE IN CREATED THINGS. THE SUBSTANCE OF ALL CREATED THINGS IS LIGHT. THE ONE SUBSTANCE OF THINKING MIND IS ALL THAT EXISTS." "MIND IS EXPRESSED IN LIGHT".

HUMAN HUE MAN

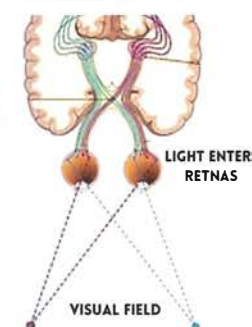
Which best defines a hue?

: the attribute of colors that permits them to be classed as red, yellow, green, blue, or an intermediate between any contiguous pair of these colors. red with an orange hue.

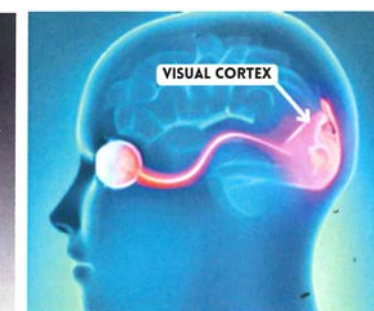
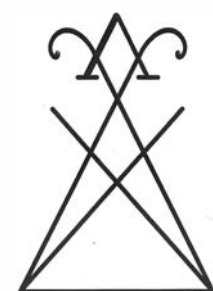
AS A HUE MAN, WE ARE AN ATTRIBUTE OF A COLOUR THAT PERMITS THEM TO BE CLASSED THAT SPECIFIC COLOUR. EACH INDIVIDUAL IS THE MIND, NOT THE PHYSICAL BODY. WITHOUT THE MIND THE PHYSICAL BODY/WORLD WOULD CEASE TO EXIST. THE MIND IS SPIRIT. THE MIND IS THE INTELLECT THAT MANIPULATES THE PHYSICAL BODY AND THE WORLD AROUND US. THE MIND IS LIKE A FREQUENCY TUNER, TUNING ITSELF INTO DIFFERENT FREQUENCIES. THE MIND EXISTS WITHIN THE MENTAL PLANE, WHICH IS SHARED BETWEEN ALL THE MINDS OF THE UNIVERSE. THOUGHTS ARE NOT CREATED BY THE INDIVIDUAL; THEY ARE RECEIVED BASED ON WHAT FREQUENCY OUR MIND IS SET TO. IF WE SET OUR MIND TO A SPECIFIC TOPIC, LIKE GENERATING WEALTH, FOR EXAMPLE, WE TUNE INTO THAT FREQUENCY IN THE MENTAL PLANE, AND WE WILL RECEIVE THOUGHTS ON HOW TO GENERATE WEALTH.

OUR MIND IS GENERALLY OPERATING OFF ONE SPECIFIC FREQUENCY BASED UPON OUR DAILY THINKING PATTERNS. EVERY FREQUENCY IS A COLOUR. THEREFORE, OUR MIND IS MANIFESTING COLOURS WITHIN THE ASTRAL PLANE BASED UPON WHAT FREQUENCY OUR MIND IS GENERALLY OPERATING OFF. IF WE ARE CARRYING HATE IN OUR MIND, WE WILL BE GENERATING REDDISH COLOURS. THIS IS WHY THE WORD HUMAN MEANS AN ATTRIBUTE OF A COLOUR. WE SHOULD AIM TO BECOME VIOLET, THE HIGHEST VIBRATIONAL COLOUR WITHIN THE LIGHT SPECTRUM. WE ARE LIGHT BEINGS MANFESTED INTO PHYSICAL FORM.

YOU DO NOT SEE INTO REALITY



SIGIL OF LUCIFER



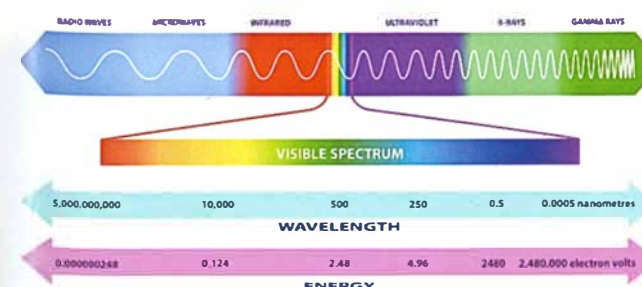
LUCIFER THE LIGHT BEARER
LUCIFER=LUCI
LUCI IN LATIN MEANS LIGHT
THE SIGIL OF LUCIFER IS SHOWING YOU THE VISUAL FIELD OF THE EYES.

WE DO NOT SEE INTO THE EXTERNAL WORLD. LIGHT WAVES ENTER THE RETINAS, AND THEN THE IMAGE WE SEE IS PRODUCED IN THE VISUAL CORTEX LOCATED AT THE BACK END OF OUR BRAINS.

THE VISUAL CORTEX IS THE PRIMARY CORTICAL REGION OF THE BRAIN THAT RECEIVES, INTEGRATES, AND PROCESSES VISUAL INFORMATION RELAYED FROM THE RETINAS

THE ANCIENT KEMETICS (EGYPTIANS) HAD A DEEP UNDERSTANDING OF THE FUNCTION OF REALITY AND THE BRAIN; THIS IS WHY IT IS REFLECTED IN THEIR SCULPTURES AS SHOWN ABOVE.

ELECTROMAGNETIC SPECTRUM



ELEMENT
ELE MENT
MENT=MIND

EL=GOD
ELEMENT=GODMIND

THE ELEMENTS ONLY EXIST WITHIN THE MIND. HUMANS ARE GOD MADE FLESH. WE ARE THE GOD IN SEPERATE BODIES. GOD IS MIND AND ALL THINGS EXIST IN THE UNIVERSAL MIND. GOD IS THINKING ALL THINGS INTO EXISTANCE.

about 0.0035 percent

The entire rainbow of radiation observable to the human eye only makes up a tiny portion of the electromagnetic spectrum - about 0.0035 percent. This range of wavelengths is known as visible light.

WHEN THE MOON ENTERS YOUR SUN SIGN (YOUR BIRTH ZODIAC SIGN), A PSYCHO-PHYSICAL OIL IS RELEASED FROM THE BRAIN DOWN THE SPINE TO THE SACRUM BONE. THIS SACRED FLUID MUST BE CARED FOR AND NOT DESTROYED BY ACIDIC FOODS AND LIQUIDS. OUR SEXUAL ENERGY/FLUIDS MUST BE RETAINED IF WE WISH TO RAISE THIS PSYCHO-PHYSICAL OIL BACK TO OUR BRAIN (HEAVEN). BY OPENING OUR CHAKRAS, PRESERVING OUR SEXUAL ENERGY, AND MAINTAINING THE CHRIST OIL, WE CAN USE THE POWER BEHIND THE SEXUAL ENERGY (KUNDALINI) TO RAISE IT UP FROM THE BASE OF THE SPINE BACK TO THE CROWN CHAKRA IN THE BRAIN.

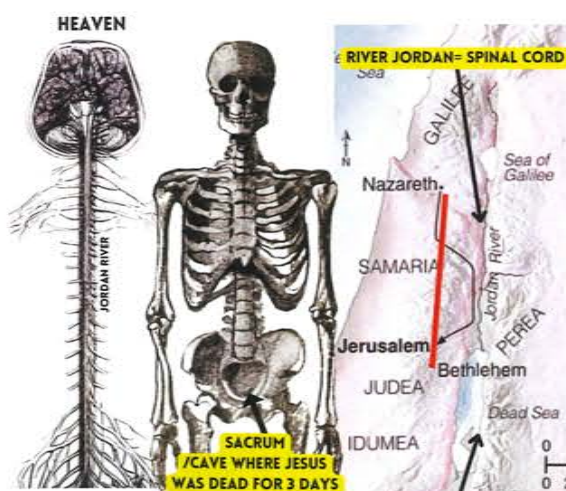
BY AWAKENING THE SEVEN CHAKRAS AND RAISING THE KUNDALINI TO THE CROWN CHAKARA, NEW ENERGY PATHWAYS OPEN UP WITHIN THE BRAIN, WHICH FEELS LIKE YOUR HEAD BECOMES HOLLOW ON THE INSIDE. THE BRAIN UNDERGOES A REMODELLING PROCESS, EXPANDING ITS CAPACITY FROM 10% TO 100% OF USAGE TO THE COMPLETE 100%. DORMANT AREAS OF THE BRAIN ARE UNLOCKED, SIGNALLING NEW WAYS OF BRAIN FUNCTIONING AND EXPERIENCING THE WORLD. THE KUNDALINI, OVER TIME, BECOMES A SELF-SUSTAINING ENERGY CIRCUIT FUELED BY FOOD AND WATER THAT GROWS AND GETS STRONGER.

OIL PROCESS:
 1-THE CLAUSTRUM (CLAUS-SANTA CLAUSE) PRODUCES THE PSYCHO-PHYSICAL FLUID WHICH THEN GOES TO THE PINEAL AND PITUITARY GLAND
 2-THE PINEAL GLAND ELECTRICALLY CHARGES THE FLUID (MALE/ JOSEPH)
 3-THE PITUITARY GLAND MAGNETICALLY CHARGES THE FLUID (FEMALE/ MARY)
 4-THEN THE FLUID WILL TRAVEL DOWN THE TWO NERVES, THE IDA WHICH IS CONNECTED TO THE PITUITARY, AND THEN THE PINGALA WHICH IS CONNECTED TO THE PINEAL GLAND.
 5-THE OIL THEN RESTS FOR 2/3 DAYS ON THE SACRUM BONE/SOLAR PLEXUS
 6-IF THE OIL IS SAVED AND NOT DESTROYED THE OIL WILL ACTIVATE THE KUNDALINI ENERGY WHICH WILL TURN THE OIL INTO A GAS AND RISE BACK UP THE 33 VERDABREAS TO THE MEDULLA OBLONGATA.
 7-THIS WILL THEN PASS TO THE PINEAL GLAND AND THEN TO THE CEREBRUM WHICH WILL REBIRTH/RESURRECT ALL BRAIN CELLS, ACTIVATE THE PINEAL GLAND, AND REGENERATE ALL THE CELLS IN THE BODY
 THIS PROCESS IS SYMBOLISED AS BEING "BORN AGAIN"

HOW TO RAISE THE OIL
 -RETAIN YOUR SEXUAL FLUIDS
 -CONSUMING AN ALKALINE DIET
 -NO CONSUMPTION OF ACIDIC FOODS/FLUIDS
 -NO CONSUMING ALCOHOL
 -KUNDALINI MEDITATION
 -BALANCE ALL CHAKARAS
 -KEEPING YOUR TONGUE ON THE TOP OF YOUR MOUTH
 -PROPER BREATHING

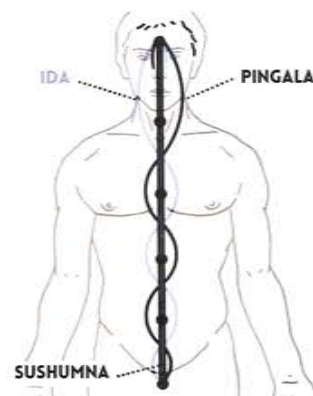
PSALMS 137:6

MY TONGUE CLING TO THE ROOF OF MY MOUTH IF I DO NOT REMEMBER YOU, IF I DO NOT CONSIDER JERUSALEM MY HIGHEST JOY



THE CEREBROSPINAL SYSTEM IS AN EXTENSION OF THE BRAIN

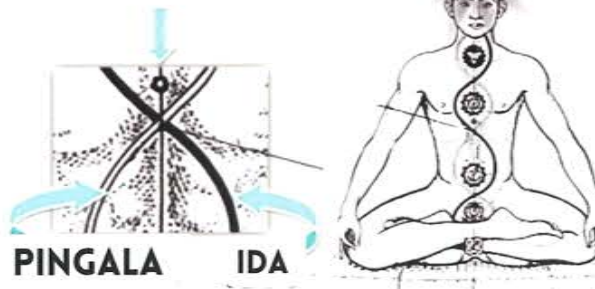
THE DEAD SEA= SACRUM BONE/ SOLAR PLEXUS



THE IDA (FEMININE) CHANNEL IS CONNECTED TO THE PITUITARY GLAND.

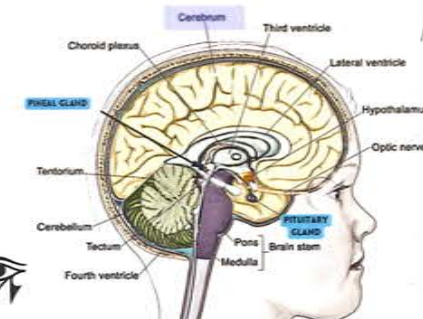
THE PINGALA (MASCULINE) CHANNEL IS CONNECTED TO THE PINEAL GLAND.

SUSHUMNA



PINGALA IDA

CLAUSTRUM=SANTA CLAUS



THE BRAIN IN THE BIBLE IS:
 -THE UPPER ROOM WHERE JESUS MEETS THE 12 DISCIPLES/12 CRANIAL NERVES
 -THE HOLY LAND
 -THE LAND FLOWING WITH MILK AND HONEY
 -PROMISE LAND OF ISRAEL

MILK=PITUITARY GLAND
 HONEY=PINEAL GLAND

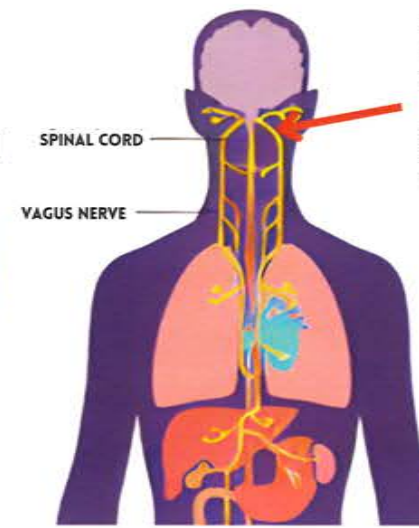
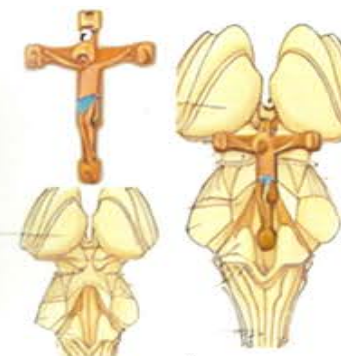
CHRISTOS=GREEK FOR OIL
 THEN IT BECAME CHRIST

CORINTHIANS 13:5
 "DO YOU NOT KNOW THAT JESUS CHRIST IS WITHIN YOU?"

MEDICAL SYMBOL



JESUS WAS CRUCIFIED AT GOLGOTHA WHICH TRANSLATES TO THE PLACE IN THE SKULL, THIS IS JESUS ON THE CROSS OVERLAPPED ONTO THE MID BRAIN



THE CHRIST OIL PASSES THE 33 VERTEBRAS OF THE SPINE AND THEN PASSES THE VAGUS NERVE WHICH CROSSES OVER

JESUS WAS CRUCIFIED AT 33 BECAUSE IT WAS THE CRUCIFICATION OF THE CHRIST OIL PASSING THE 33 VERDABREAS AND CROSSING THE VAGUS NERVE.

33 VERDABREAS FOR THE 33 YEARS OF CHRIST/CHRIST OIL. JESUS DYING AT 33 ALSO SYMBOLIZES TURNING MATTER INTO SPIRIT WHEN MOVING THE OIL PAST THE 33 VERDABREAS. AS HE HAS SACRIFICED HIS FLESH NATURE/PERSONALITY AND HAS NOW MANIFESTED HIS TRUE GOD SELF

JOHN 3:3
 "UNLESS YOU ARE BORN AGAIN, YOU CANNOT SEE THE KINGDOM OF GOD".

IT'S NOT A COINCIDENCE THAT THE VERSE JOHN 3:3 IS TALKING ABOUT BEING REBORN AGAIN. YOU ARE REBORN AGAIN WHEN THE OIL RISES BACK UP PASTED THE 33 VERDABREAS.

3 3

MATTHEW 6:22
 "THE LIGHT OF THE BODY IS THE EYE; THEREFOR IS THINE EYE BE SINGLE, THE WHOLE BODY SHALL BE FULL OF LIGHT".

GENESIS 32:30
 "JACOB NAMES THE PLACE PENIEL, FOR HE SAID, I HAVE SEEN GOD FACE TO FACE" PENIEL IS THE THE PINEAL GLAND WHICH IS THE SEAT OF CONSCIOUSNESS (THRONE OF GOD).

"THE KINGDOM OF GOD IS WITHIN YOU" IS THE KEY PHRASE IN LUKE 17:21

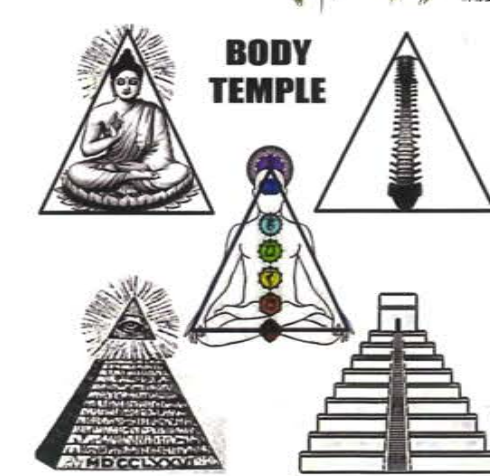
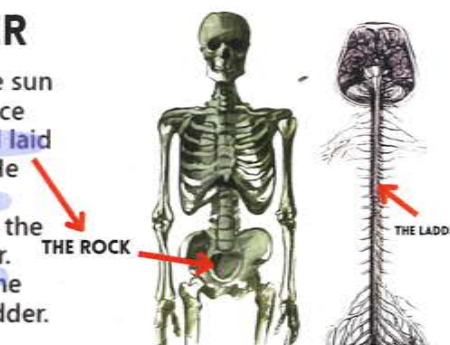
JACOB SYMBOLIZES THE OIL IN THIS PARABLE. THE ROCK HE FELL ASLEEP ON IS THE SACRUM BONE, WHERE THE OIL FALLS AND STAYS FOR SOME TIME. HE THEN SAW A LADDER THAT REACHED HEAVEN, WHICH IS THE SPINAL CORD LEADING UP TO THE BRAIN (HEAVEN). THE SPINAL CORD IS THE STAIRWAY TO YOUR HEAD (HEAVEN).

FREEMASONS SYMBOLIZE THE SPINAL CORD WITH A LADDER OR STAIRCASE

Genesis 28:10-22 ERV

JACOB'S LADDER

Jacob left Beersheba and went to Haran. The sun had already set when he came to a good place to spend the night. He took a rock there and laid his head on it to sleep. Jacob had a dream. He dreamed there was a ladder that was on the ground and reached up into heaven. He saw the angels of God going up and down the ladder. And then Jacob saw the LORD standing by the ladder. He said, "I am the standing by the ladder."

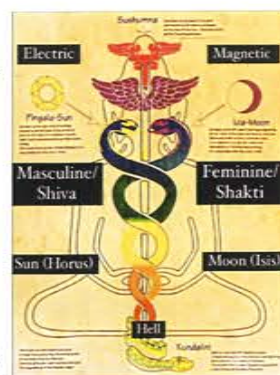
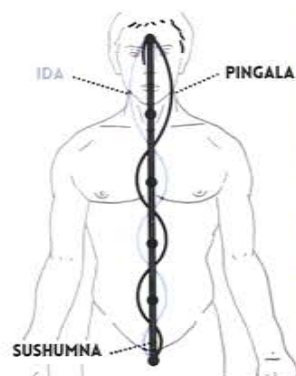


BODY TEMPLE

CHRISTIANS HAVE HEARD THAT JESUS WAS CRUCIFIED AT 33, BETWEEN TWO THIEVES AT GOLGOTHA, WHICH TRANSLATES TO 'PLACE OF THE SKULL.' THIS STORY IS SYMBOLIC, REPRESENTING THE SPACE WITHIN YOUR SKULL, BETWEEN THE BRAIN'S LEFT AND RIGHT HEMISPHERES.

THE AGE 33 SYMBOLIZES THE SPINAL COLUMN WITH 33 VERTEBRAE ON THE BACK OF THE HUMAN SPINE, LIKE THE 'LADDER JACOB SAW IN GENESIS'. THE THIRD CROSS REPRESENTS THE MID-BRAIN, AND THE VENTRICLES CREATE A HOLY GRAIL - SHAPED CAVITY INSIDE YOUR SKULL. THIS SPACE, LIKE A MANGER AND LATER A TOMB, HOLDS THE PIA MATER OR 'TENDER MOTHER' (MOTHER MARY), PRODUCING CEREBROSPINAL FLUID, OFTEN LINKED TO THE 'SALT OF SALVATION /SALIVATION.' THIS FLUID, CALLED 'CHRISM,' IS BORN, BAPTIZED RIVER JORDAN (SPINAL CORD) TRAVELS DOWN THE NERVOUS SYSTEM, AND LATER RETURNS TO BE SYMBOLICALLY CRUCIFIED AT THE 33RD VERTEBRA.

THIS PROCESS CROSSES THE ARBOR VITAE OF THE CEREBELLUM, LEADING TO A RETURN TO THE CAVE FOR SANCTIFICATION, A SYMBOLIC RESURRECTION OR BEING 'BORN AGAIN' FROM THE CAVE OF THE THIRD VENTRICLE.



THE SUN AND MOON ARE THE TWO MALE AND FEMALE PRINCIPLES THAT CORRESPOND WITH ALL THINGS IN THIS CREATION. THE SUN IS POSITIVE, MALE & ELECTRIC. THE MOON IS NEGATIVE, FEMALE, MAGNETIC.

THE SUN AND MOON CREATE THE SACRED FLUIDS WITHIN THE BRAIN. THE TWO SACRED FLUIDS ARE REFERRED TO IN THE BIBLE AS THE MILK AND HONEY. THE LAND FLOWING WITH MILK AND HONEY IS THE BRAIN.

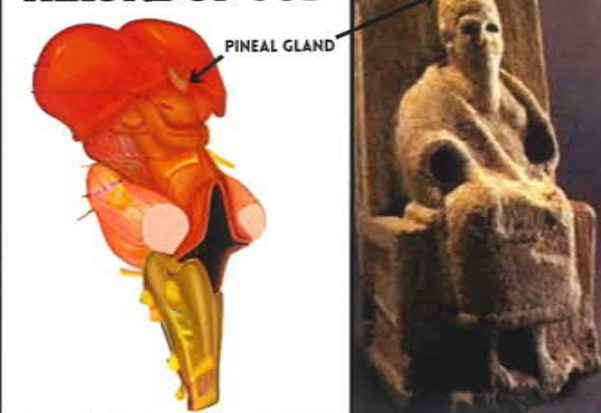
NUMBERS 14:8
"AND IF THE LORD IS PLEASED WITH US, HE WILL BRING US SAFELY INTO THAT LAND AND GIVE IT TO US. IT IS A RICH LAND FLOWING WITH MILK AND HONEY, AND HE WILL GIVE IT TO US!"

"LORD OR GOD" = HIGHER SELF/INNER YOU/OBSERVER/CHRIST
MILK=MOON=PITUITARY GLAND
HONEY=SUN=PINEAL GLAND



"THREE WISE MEN FROM THE EAST"
-THALAMUS
-PINEAL GLAND
-PITUITARY GLAND
LADDER=SPINE
EAST IS UPWARDS
TOWARDS THE BRAIN

THRONE OF GOD



THERE ARE THREE SIGNIFICANT GLANDS IN THE BRAIN: THE PINEAL GLAND, PITUITARY GLAND, AND THALAMUS. THE THALAMUS IS INTEGRAL TO SENSORY PERCEPTION AND CONSCIOUSNESS PLUS IT MAY ALSO PRODUCE DOPAMINE.

THALAMUS

DOPAMINE IS A NEUROTRANSMITTER, WHICH IS A CHEMICAL MESSENGER THAT TRANSMITS SIGNALS IN THE BRAIN AND OTHER AREAS OF THE NERVOUS SYSTEM. IT PLAYS A CRUCIAL ROLE IN SEVERAL FUNCTIONS, INCLUDING:

- MOOD REGULATION: DOPAMINE IS OFTEN REFERRED TO AS THE "FEEL-GOOD" NEUROTRANSMITTER BECAUSE IT IS ASSOCIATED WITH PLEASURE AND REWARD. IT PLAYS A ROLE IN FEELINGS OF MOTIVATION, PLEASURE, AND REINFORCEMENT.
- MOTOR CONTROL: DOPAMINE IS INVOLVED IN THE CONTROL OF MOVEMENT. THE DEGENERATION OF DOPAMINE-PRODUCING NEURONS IS A KEY FEATURE IN CONDITIONS LIKE PARKINSON'S DISEASE, WHICH IS CHARACTERIZED BY TREMORS AND DIFFICULTIES IN MOVEMENT.
- ATTENTION AND LEARNING: DOPAMINE IS ESSENTIAL FOR COGNITIVE FUNCTIONS SUCH AS ATTENTION AND LEARNING. IT IS INVOLVED IN THE BRAIN'S REWARD SYSTEM, INFLUENCING BEHAVIOR AND DECISION-MAKING.
- REGULATION OF SLEEP: DOPAMINE IS ALSO INVOLVED IN THE REGULATION OF SLEEP. CHANGES IN DOPAMINE LEVELS CAN IMPACT SLEEP-WAKE CYCLES.

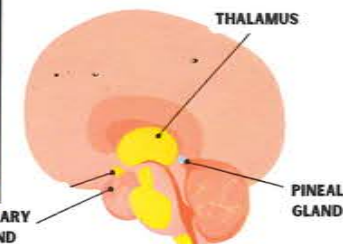
IMBALANCES IN DOPAMINE LEVELS HAVE BEEN LINKED TO VARIOUS NEUROLOGICAL AND PSYCHIATRIC DISORDERS. TOO MUCH DOPAMINE ACTIVITY IS ASSOCIATED WITH CONDITIONS LIKE SCHIZOPHRENIA, WHILE TOO LITTLE DOPAMINE IS LINKED TO DISORDERS SUCH AS PARKINSON'S DISEASE AND DEPRESSION. TOO MUCH DOPAMINE AND TOO LITTLE CAN ALSO BE LINKED TO ANXIETY, DEPRESSION, ANOREXIA, MENTAL DISORDERS, ADDICTION, PTSD, AND DEMENTIA.

PINEAL GLAND

THE PINEAL GLAND IS RESPONSIBLE FOR PRODUCING MELATONIN, A HORMONE THAT MAY REJUVENATE RED BLOOD CELLS AND COUNTERACT THE AGING PROCESS WHILE ALSO PREVENTING THE BODY'S SYSTEMS FROM SHUTTING DOWN.

PITUITARY GLAND

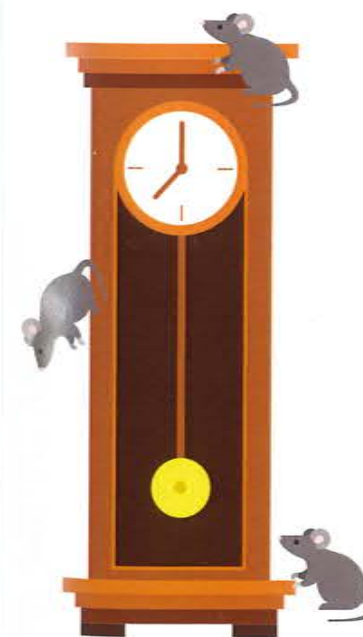
MEANWHILE, THE PITUITARY GLAND RELEASES SEROTONIN, A NATURAL MOOD STABILIZER THAT INDUCES FEELINGS OF HAPPINESS. ADDITIONALLY, SEROTONIN PLAYS A ROLE IN WOUND HEALING, TOXIN REGULATION THROUGH BOWEL CONTROL, MAINTAINING WAKEFULNESS, ALLEVIATING DEPRESSION, AND REGULATING APPETITE AND DIGESTION.



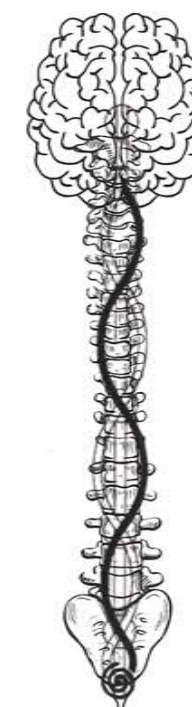
THE THREE WISE MEN, TRADITIONALLY KNOWN FOR PRESENTING GIFTS TO CHRIST AT HIS BIRTH, CAN BE METAPHORICALLY LINKED TO THE THREE ESSENTIAL BRAIN GLANDS-PINEAL, PITUITARY, AND THALAMUS-WHICH CONTRIBUTE SEROTONIN, MELATONIN, AND DOPAMINE TO THE CENTRAL NERVOUS SYSTEM AND THE BODY. THE HEALTH OF THE BODY RELIES ON THE HARMONIOUS FUNCTIONING OF THESE GLANDS.

IN BIBLICAL REFERENCES TO THE PROMISED LAND FLOWING WITH MILK AND HONEY, THE PINEAL GLAND SECRETES MELATONIN, SYMBOLIZED AS HONEY, WHILE THE PITUITARY GLAND PRODUCES SEROTONIN, SYMBOLIZED AS MILK. THE BLENDING OF THESE TWO FLUIDS FORMS THE "CHRISTOS," OR CHRIST OIL, WITHIN THE BRAIN. THIS SACRED FLUID, REPRESENTING THE UNION OF HONEY AND MILK, IS RELEASED DOWN THE SPINE TO REGULATE BODILY FUNCTIONS. THIS PROCESS IS POETICALLY ECHOED IN THE NOTION OF PRESENTS DELIVERED DOWN THE CHIMNEY BY SANTA CLAUS, WHERE THE CHIMNEY SYMBOLIZES THE SPINE AND THE PRESENTS SERVE AS SYMBOLS FOR THE VITAL FLUIDS GENERATED IN THE BRAIN.

SANTA CLAUS SAINT CLAUSE CLAUSTRUM IN THE BRAIN



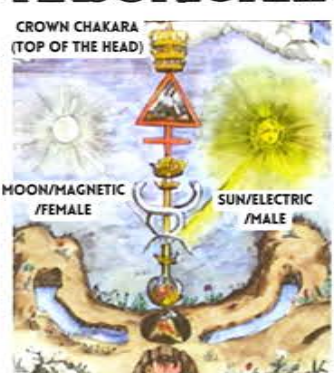
HICKORY HICKORY DOCK
WENT UP AND DOWN
THE CLOCK



GENESIS 3:24
GARDEN OF EDEN, CHERUBIM
AND A FLAMING SWORD
FLASHING BACK AND FORTH
TO GUARD THE WAY TO THE
TREE OF LIFE.

THE FLAMING SWORD IS THE
CONSCIOUSNESS IN THE
CENTRE OF THE BRAIN. THE
TREE OF LIFE IS THE CENTRAL
NERVOUS SYSTEM BELOW THE
BRAIN AND THE CHERUBIM IS
THE BRAIN.

MASONIC ART



TWO SERPENTS TO SYMBOLIZE THE TWO KHUNDALINI CHANNELS WRAPPED AROUND THE SPINE

THE FIRE AT THE BOTTOM OF THE ARTWORK SYMBOLIZES KUNDALINI ENERGY AT YOUR SPINE'S BASE. ACTIVATION OF THE KUNDALINI ENERGY AT THE SPINE BASE IS THE FORCE USED TO PUSH THE CEREBROSPINAL FLUID UP THE SPINE TO REACH THE PINEAL GLAND.

MEDICAL SYMBOL



THE MEDICAL FIELD EMPLOYS THIS SYMBOL DUE TO THE BELIEF THAT WHEN KUNDALINI ENERGY ELEVATES CHRISM OIL TO THE BRAIN, IT POSSESSES HEALING PROPERTIES. IT IS SUGGESTED THAT STIMULATING THE SECRETION ACTIVATES DORMANT BRAIN CELLS, REGULATES BLOOD PRESSURE, AND FACILITATES OVERALL BODY REGENERATION.

MASONIC ART

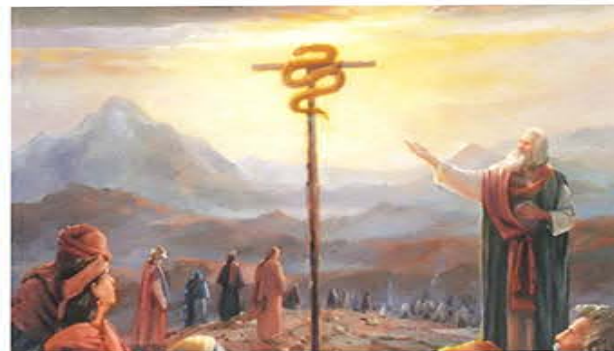
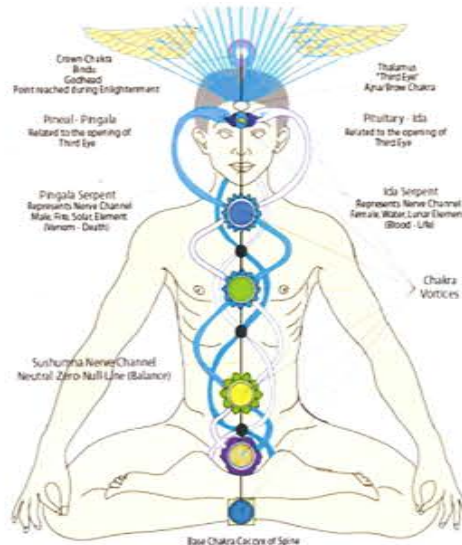


John 3:14

JUST AS MOSES LIFTED UP THE SNAKE IN THE WILDERNESS, SO THE SON OF MAN MUST BE LIFTED UP

SNAKE=SERPENT=KHUNDALINI

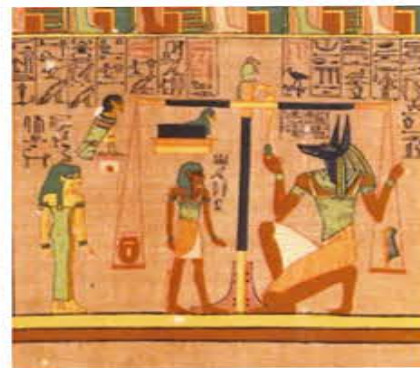
LIFTING UP THE SERPENT IS LIFTING UP THE KHUNDALINI ENERGY



"SON OF MAN MUST BE LIFTED UP"
SON=SUN=SOL=SOUL
SOUL OF MAN MUST BE LIFTED THROUGH
KHUNDALINI ACTIVATING THE PINEAL GLAND.
ACTIVATION OF THE PINEAL GLAND GIVES
YOU THE ABILITIES TO LEAVE THE BODY
AND EXPLORE OTHER REALITIES.

MOSES WAS TEACHING PEOPLE TO RAISE
THERE KHUNDALINI ENERGY TO ACTIVATE THE
PINEAL GLAND WHICH WOULD THEN GIVE THE
HUMAN OUT OF BODY ABILITIES. LEAVING
THE BODY GIVES YOU ACCESS TO WORLDS
BEYOND TIME AND SPACE.

THE STORY OF JESUS IS SYMBOLIC OF THE ALCHEMICAL PROCESS THAT OCCURS MONTHLY WITHIN THE HUMAN BODY. JESUS FALLS FROM HEAVEN AND INCARNATES ON THE EARTH, WHICH IS SYMBOLIC OF THE CHRIST OIL TRAVELING DOWN THE SPINE FROM YOUR BRAIN (HEAVEN). THE SACRED OIL STAYS STILL WITHIN THE SACRUM BONE FOR 3 DAYS, WHICH IS JESUS BEING DEAD IN THE CAVE FOR THREE DAYS. ONCE JESUS RESURRECTS (THE OIL RISING UP THE SPINE) HE GETS CRUCIFIED AT 33 YEARS OF AGE. THE SPINE CONTAINS 33 VERDABREAS, AND ONCE THE OIL PASSES ALL 33 VERDABREAS AND REACHES THE OPTIC THALAMUS, IT GETS CRUCIFIED ON THE CROSS BECAUSE THE THALAMUS LOOKS LIKE A CROSS. THE DEATH OF JESUS SYMBOLIZES TURNING MATTER INTO SPIRIT AS THE RETURN OF THE OIL GIVES THE HUMAN SUPERNATURAL ABILITIES LIKE ASTRAL TRAVEL.



BIRDS SYMBOLIZE THE HOLY SPIRIT/SOUL.

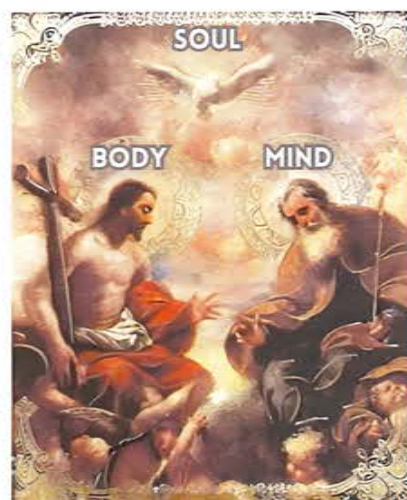


THE MIND IS THE SERPENT BECAUSE SERPENTS SYBOLIZE KNOWLEDGE. THE MIND IS THE INTERLECT THAT CONNECTS THE SOUL TO THE BODY; THIS IS WHY THE MIND IS IN THE MIDDLE; IT PROJECTS THE SOUL INTO THE REALITY WE CHOOSE TO EXPERIENCE.

THE SOUL (BRAHMA) HAS MULTIPLE FACES, SYMBOLISING THE SOUL TAKING ON DIFFERENT BODIES; IT IS DIMENSIONAL.

JESUS CHRIST
JESUS=BODY
CHRIST=CHRIST CONCIOSNESS

FREEMASONS DO NOT SAY JESUS CHRIST THEY SAY CHRIST JESUS. THEY DO THIS TO SAY CONCIOSNESS COMES FIRST. CHRIST OVER THE BODY.



THE THIRD EYE IS ALSO REFERED TO AS THE PINEAL GLAND, MINDS EYE AND SINGLE EYE. THE CENTER OF THE BRAIN IS THE PINEAL GLAND, WHICH ENCAPSULATES PURE CONSCIOUSNESS. MISINTERPRETING THE PINEAL GLAND AS POSSESSING ALL THE MYSTICAL QUALITIES IS A MISTAKE. THE GLAND IS NOT THE LITERAL THIRD EYE; IT SERVES AS A REFLECTION OR SYMBOL OF THAT ORGAN IN THE BODY. THE GENUINE POWER OF THE GLAND LIES IN ITS SPIRITUAL COUNTERPART, NOT THE PHYSICAL. THE TRUE THIRD EYE ISN'T VISIBLE TO REGULAR SIGHT BUT SHOWS ITSELF TO CLAIRVOYANTS AS A COLORFUL AURA AROUND THE GLAND, GLOWING WITH ELECTRIC LIGHT.

H. P. BLAVATSKY SAYS THE BRAIN'S PERCEPTIVE ORGAN IS IN THE AURA OF THE PINEAL GLAND. THIS AURA RESPONDS TO VIBRATIONS BUT CAN ONLY BE FELT, NOT SEEN, IN LIVING PEOPLE. WHEN THINKING, A CONSTANT VIBRATION HAPPENS IN THIS AURA. A CLAIRVOYANT CAN ALMOST SEE SEVEN SCALES OF LIGHT IN THE BRAIN, FROM DIM TO BRIGHT.

THE MIND DWELLING IN THE PINEAL GLAND IS A PSYCHIC CENTER, SERVING AS THE INTELLIGENCE THAT GOVERNS THE PHYSICAL BODY. THE BRAIN IS LIKENED TO AN ELECTRICAL COMPUTER RESPONSIBLE FOR INTERPRETING AND IMPLEMENTING THE COMMANDS AND INSTRUCTIONS ISSUED BY THE MIND. THE THIRD EYE/MIND HAS THE ABILITY TO PORTRAY THE SPIRITUAL PLANES THAT LIE BEYOND THE PERCEPTION OF THE TWO PHYSICAL EYES. IT IS THE GATEWAY INTO THE ETHERIAL PLANES THAT LIES WITHIN THE MIND OF MAN.

ACTIVATING THE THIRD EYE

AS HUMANS, WE CONSIST OF SPIRIT AND MATTER. TO ACHIEVE A GENUINE CONNECTION WITH OUR MIND AND SPIRIT, IT'S CRUCIAL TO BALANCE ALL THREE ASPECTS OF OURSELVES. FOR EXAMPLE, IF THE BODY IS IN POOR HEALTH, IT CAN IMPACT THE SPIRIT. TO CONNECT WITH OUR INNER VISION, IT'S RECOMMENDED TO DETOXYFIFY THE PINEAL GLAND. ONE APPROACH IS TO CONSUME A SINGLE FRUIT OF YOUR CHOICE FOR A WEEK WHILE INCORPORATING DETOXYFYING HERBS LIKE CAYENNE PEPPER AND ORGANIC SEA MOSS. RESEARCH INDICATES THAT FLUORIDE CAN LEAD TO THE CALCIFICATION OF THE PINEAL GLAND, WEAKENING THE CONNECTION TO THE TRUE SELF. FLUORIDE IS COMMONLY FOUND IN TAP WATER, TOOTHPASTE, AND PROCESSED FOODS, SO ITS BEST TO STAY AWAY FROM THEM.

THE MAIN PURPOSE OF MEDITATION IS TO ACTIVATE THE PINEAL GLAND AND ESTABLISH A CONNECTION WITH THE AUTHENTIC COSMIC SELF LOCATED AT THE CENTER OF THE BRAIN. PROPER MEDITATION CAN LEAD TO MYSTICAL EXPERIENCES, INCLUDING TINGLING SENSATIONS IN THE HEAD AND THROUGHOUT THE BODY, A SENSE OF HOLLOWNESS, LIGHTNESS, AND POSSIBLY EVEN OUT-OF-BODY EXPERIENCES.

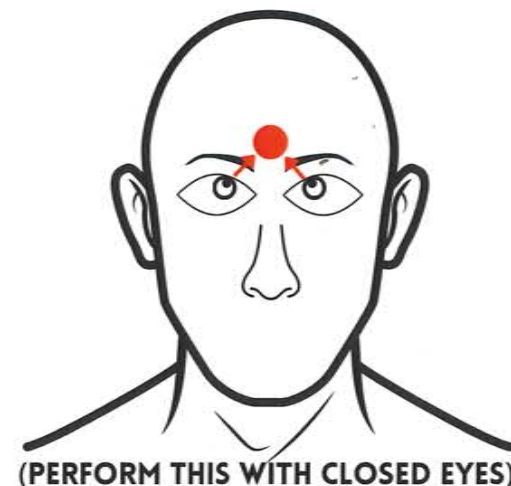
WHERE ATTENTION IS DIRECTED, ENERGY FOLLOWS, AND THE MIND SERVES AS THE GUIDE FOR THIS ENERGY. DURING MEDITATION, THE FOCUS IS ON DIRECTING ATTENTION TO THE CENTER OF THE MIND. THIS CAN BE ACHIEVED MENTALLY BY CONCENTRATING THE MIND AND PHYSICALLY BY ALIGNING THE EYES WITH THE CENTER OF THE FOREHEAD, AS ILLUSTRATED IN THE IMAGE TO THE RIGHT. WHEN PRACTICING THIS, THE GOAL IS TO CHANNEL ALL ENERGY AND AWARENESS TO THE BRAIN'S CENTER WHILE MAINTAINING A RHYTHMIC BREATH AND STILLNESS.

ENSURING A COMFORTABLE POSITION IS CRUCIAL, GIVEN THE EXTENDED PERIODS OF SITTING DURING MEDITATION. TO START, FIND A COMFORTABLE POSITION, INHALE THROUGH THE NOSE, EXHALE THROUGH THE MOUTH WITH CLOSED EYES, AND CONCENTRATE ALL ATTENTION ON THE CENTER OF THE BRAIN, JUST BETWEEN THE EYEBROWS. PRACTICE THIS FOR APPROXIMATELY 10-30 MINUTES; THE MORE EXTENDED THE DURATION, THE DEEPER THE CONNECTION YOU MAY ESTABLISH.

THE SUN CORRESPONDS WITH THE PINEAL GLAND, WHICH IS WHY THERE'S AN ANCIENT PRACTICE CALLED SUN GAZING. THE SUN SERVES AS THE PRIMARY SOURCE OF ENERGY FOR OUR BRAINS, AND THIS ENERGY ENTERS OUR BODY THROUGH THE EYES. SUN GAZING IS A METHOD TO RECEIVE THIS ESSENTIAL ENERGY. WHEN YOU ENGAGE IN SUN GAZING FOR EXTENDED PERIODS, YOU MAY EXPERIENCE A SENSATION IN THE CENTER OF YOUR BRAIN, WHICH INTENSIFIES THE LONGER YOU DO IT. THE SUN'S RAYS CAN ASSIST IN DECALCIFYING AND ACTIVATING THE PINEAL GLAND. FOR BEGINNERS, IT'S RECOMMENDED TO START SUN GAZING WHEN THE SUN'S RAYS ARE WEAK, SUCH AS DURING SUNSET OR SUNRISE. AS YOU GAIN EXPERIENCE, YOU CAN SAFELY PRACTICE SUN GAZING AT ANY TIME.



WALTER RUSSEL - "MAN CANNOT COMPREHEND GOD FOR MAN MUST BE GOD TO COMPREHEND HIM. MAN IS GOD AND THEREFORE GOD IS WITHIN THE COMPREHENSION OF MAN". "MAN IS MIND, MAN IS MATTER. MIND AND MATTER ARE ONE. GOD IS MIND, THIS IS A UNIVERSE OF MIND"



(PERFORM THIS WITH CLOSED EYES)

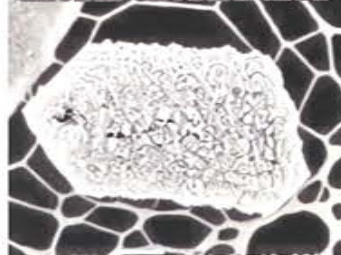


THE PINEAL GLAND

THE PINEAL GLAND -

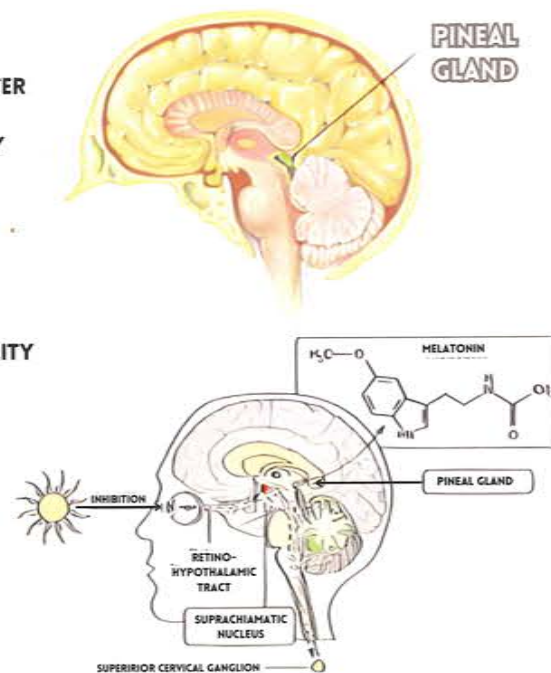
- THE PINEAL GLAND IS A CONED SHAPED BODY, 6MM HIGH AND 4MM IN DIAMETER
- THE MIND ENHABITS THE PINEAL GLAND.
- ITS THE ORGAN THROUGH WHICH THE ELECTRICAL FORCES OF THE BODY PLAY
- IT'S WHAT THE UNIVERSAL ESSENCE/SOUL/CONSCIOUSNESS DEPOSITED
- IT IS THE LIGHT OF THE BODY THAT GIVES LIFE TO THE WHOLE TEMPLE.
- THE PINEAL IS THE MALE SPIRITUAL ORGAN.
- THE PINEAL GLAND OPENS WHEN THE TWO EYES ARE CLOSED FOR PERIODS.
- THE MORE SPIRITUAL WORK YOU DO THE MORE ACTIVE THE PINEAL GLAND BECOMES
- THE PINEAL GLAND IS COVERED IN MICROCRYSTALS. CRYSTALS HAVE THE ABILITY TO RECEIVE AND EMIT FREQUENCIES.

CRYSTALS ON PINEAL GLAND



THE PINEAL GLAND HAS PIZOLUMINESCENT CELLS WHICH ARE CRYSTALLINE JAGGED SHAPED.

- THE RETINA OF THE TWO EYES ALSO HAS THESE CELLS
- THE PINEAL HAS THEM BECAUSE IT TAKES IN LIGHT AND REFLECTS, REFRACTS AND EMITES LIGHT.
- THE PINEAL GLAND EMITS LIGHT THIS IS WHY WE SAY ENLIGHTENMENT.



THE VATICAN SUPPRESSED THE INFORMATION ON THE PINEAL GLANDS' MYSTICAL POWERS. THE VATICAN (CATHOLIC CHURCH) TOOK OVER EUROPE AND DESTROYED/STOLE ALL THE KNOWLEDGE AND LIBRARIES CONTAINING ALL THE ANCIENT TEXTS AND INFORMATION OF OUR TRUE POWERS. THEY THEN CREATED AN ENCODED HOLY BIBLE TO KEEP PEOPLE LOOKING OUTSIDE OF THEMSELVES FOR GOD.

THE PINEAL GLAND IS THE SEAT OF CONSCIOUSNESS, ALSO KNOWN AS THE SEAT OF THE SOUL/THRONE OF GOD. THE PINEAL GLAND IS AN EMPTY CHAMBER THAT HOLDS THE UNIVERSAL ESSENCE WHICH IS INVISIBLE TO THE NAKED EYE. OUR TRUE SELF IS WITHIN THE PINEAL GLAND AND FROM THIS CENTRE WE CONTROL THE PHYSICAL BODY.

EYE OF RA EYE OF HORUS



- 1/2 = Smell
- 1/4 = Sight
- 1/8 = Thought
- 1/16 = Hearing
- 1/32 = Taste
- 1/64 = Touch



SUMARIAN GOD HOLDING PINE CONE SYMBOLIZING PINEAL GLAND.



THE VATICAN SYMBOLIZING THE PINEAL GLAND



THE ANCIENT EGYPTIANS KNEW ABOUT THE PINEAL GLAND

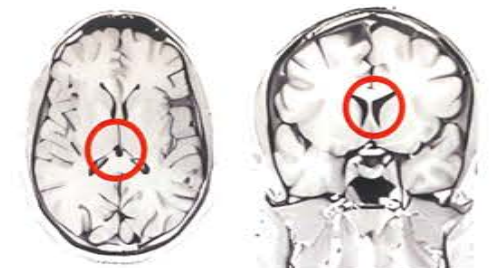


THE PINEAL GLAND



EVERYTHING IN THE BODY LEADS BACK TO ONE SOURCE POINT, WHICH IS THE CENTRE OF THE BRIAN. THE CENTRE OF THE BRAIN IS THE PINEAL GLAND, WHICH WE REFER TO AS "I." "WHEN WE SAY "I" WE ARE REFERRING TO THE INNER BEING/ OBSERVER/ENTITY THAT IS CONTROLLING THE BODY. IF WE SAY "MY BODY," THEN IF IT IS MINE, IT IS NOT ME. THIS BODY IS THE VEHICLE FOR OUR SOUL/ENTITY TO OPERATE WITHIN THIS PHYSICAL WORLD OF TIME AND SPACE.

33 VERDABREA

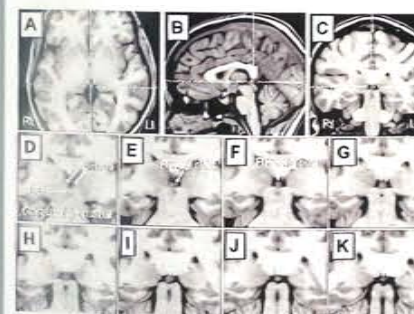


THE THRONE OF GOD IS IN THE CENTRE OF THE BRAIN. CONSCIOUSNESS IS GOD AND WE ARE ALL THAT SAME SPARK OF CONSCIOUSNESS IN THE CNETRE OF THE BRAIN.

he was taken up into heaven and he sat at the right hand of God.
Mark 16:19

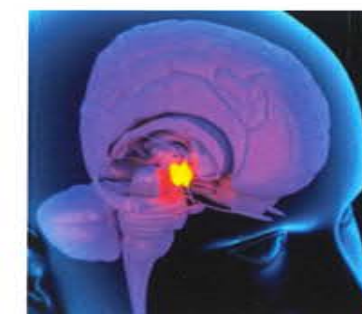
CHRONICLES 3:10

In the most holy place he made two cherubim by carving, and they overlaid them with gold.



THE MOST HOLY PLACE = THE PINEAL GLAND/CENTRE OF THE BRAIN.

TWO CHERUBIM = THE TWO HEMISPHERS OF THE BRAIN.



THE SWORD IN THE LAMB SYMBOLIZES KILLING THE LOWER NATURE OF YOUR CONSCIOUSNESS AND MOVING UP THE SPINE TO THE HIGHER MIND/HIGHER SELF. NOTICE THE LAMB IS LOOKING UP AT THE CUP WITH THE SUN ON THE TOP. THE CUP IS YOUR HEAD AND NECK, AND THE SUN IS YOUR CONSCIOUSNESS IN THE CENTRE OF THE BRAIN ON TOP OF YOUR NECK.

THE BIRD IS AN AIR ANIMAL THAT SYMBOLIZES THE HIGHER NATURE OF MAN. THE GROUND ANIMALS SYMBOLISE THE LOWER NATURE OF MAN. THE TREE STUMP SYMBOLIZES YOUR SPINE

MASONIC ART SUMARIAN ART



HOLY GRAIL=NECK AND SKULL

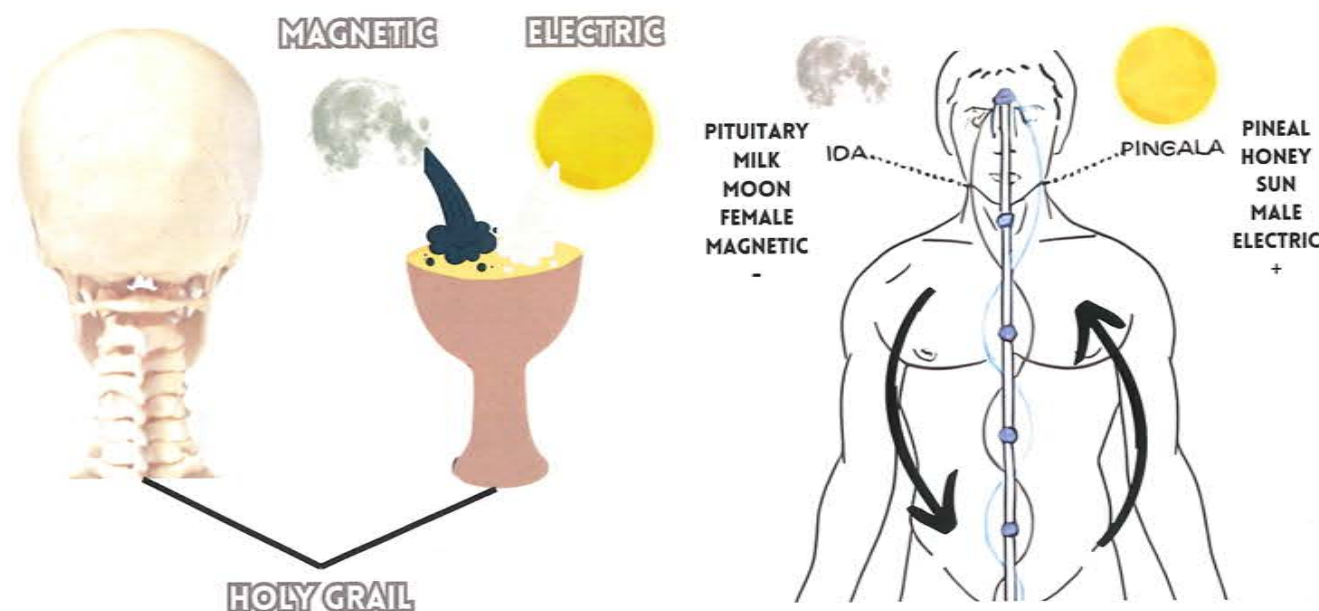
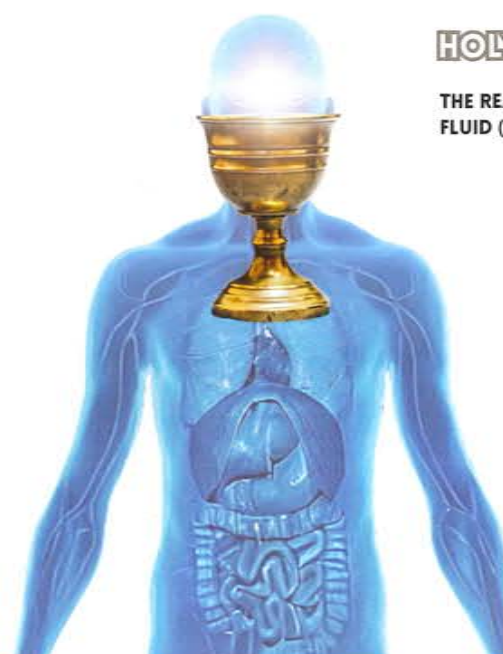
THE REASON WHY THE HOLY GRAIL IS A CUP IS BECAUSE THE SUN AND MOON CREATE THE HOLY FLUID (CHRIST OIL) AND FILL IT UP EVERY MONTH.

MASONIC ART



THIS MASONIC ART SYMBOLIZES THE SUN AND MOON CREATING THE "MILK AND HONEY" IN THE BRAIN.

THE MILK IS THE FLUID CREATED BY THE MOON. THE HONEY IS THE FLUID CREATED BY THE SUN.



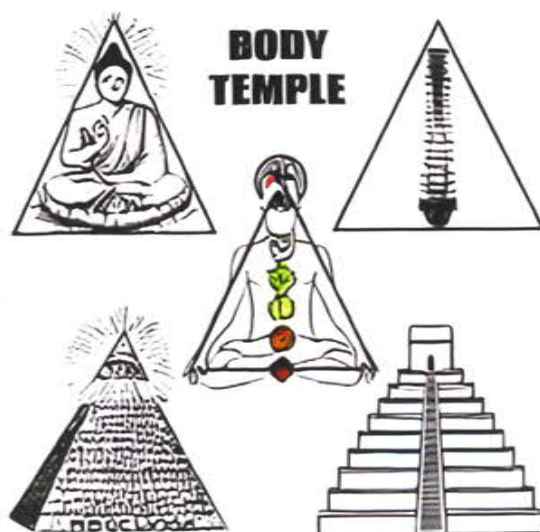
CORINTHIANS 6:19-20

"OR DO YOU NOT KNOW THAT YOUR BODY IS A TEMPLE OF THE HOLY SPIRIT WITHIN YOU, WHOM YOU HAVE FROM GOD? YOU ARE NOT YOUR OWN, FOR YOU WERE BOUGHT WITH A PRICE. SO GLORIFY GOD IN YOUR BODY."

GLORIFY GOD IN YOUR BODY IS RAISING THE CHRISM/CHRIST OIL UP THE SPINE AND LOOKING AFTER THE BODY.

THE ELITES IN POWER HAVE EXTERNALIZED ALL OF THE SACRED THINGS LIKE THE HOLY GRAIL, TEMPLE OF SOLOMON, ETC. THIS IS DONE TO KEEP YOU FROM FINDING OUT THE FACT THAT YOU ARE THE ULTIMATE OF ALL THINGS. MAN IS TRULY CREATED IN THE IMAGE OF GOD.

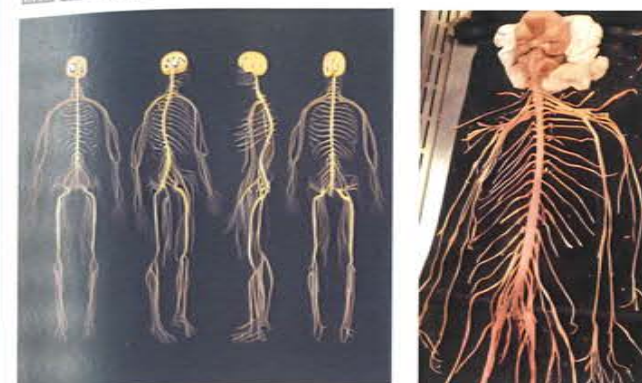
THE CHURCH AND OTHER RELIGIONS ARE TEACHING THE MASSES THE EXOTERIC, MEANING EXTERNAL TEACHINGS. THIS IS DONE PURPOSELY TO KEEP THE PYRAMID SCHEME UP AND RUNNING. MEANWHILE, THE PEOPLE IN POWER GET TAUGHT THE ESOTERIC, MEANING THE INTERNAL TEACHINGS ABOUT THE BODY, CONSCIOUSNESS, AND THE METAPHYSICAL ASPECTS OF REALITY. THE BIBLE IS WRITTEN IN SUCH A WAY IT WILL RESONATE WITH YOUR LEVEL OF UNDERSTANDING. YOU CAN PERCEIVE THE BIBLE PHYSICALLY, HISTORICALLY, AND METAPHORICALLY DEPENDING ON HOW WIDE YOU HAVE EXPANDED YOUR MIND. YOUR REALITY IS YOUR LEVEL OF REALIZATION.



GENESIS 2:9

THE TREE OF LIFE WAS ALSO IN THE MIDST OF THE GARDEN, AND THE TREE OF KNOWLEDGE OF GOOD AND EVIL.

THE TREE OF KNOWLEDGE OF GOOD AND EVIL=THE NERVOUS SYSTEM



THE TREE OF KNOWLEDGE OF GOOD AND EVIL IS THE NERVOUS SYSTEM BECAUSE IT GIVES OUR MIND KNOWLEDGE OF GOOD AND EVIL. THE MIND AND SOUL COME FROM ETERNAL BLISS, AND THE MIND PROJECTS THE SOUL INTO THIS DUALISTIC SIMULATION TO GAIN THE KNOWLEDGE OF DUALISM.

THE NERVOUS SYSTEM DECODES ELECTRICAL IMPULSES GIVEN TO IT BY THE EXTERNAL WORLD AND REPORTS BACK TO THE BRAIN. OUR CONSCIOUSNESS IS PRETTY MUCH EXPERIENCING A PROGRAM PLAYED OUT BY THE CENTRAL NERVOUS SYSTEM.

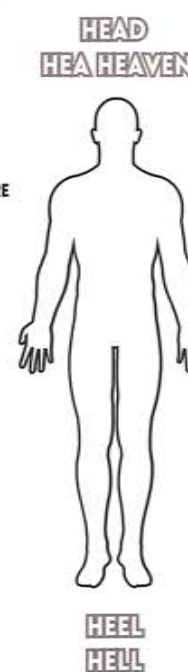
4 RIVERS IN THE GARDEN OF EDEN

GENESIS 2:10

A river flows out of Eden to water the garden and from there divides into four rivers. The first is named Pishon; it flows through Havelah where there is

THE 4 RIVERS FLOWING IN THE GARDEN OF EDEN ARE THE 4 HOLY FLUIDS IN THE BODY WHICH ARE:

- 1) BLOOD
- 2) SALIVER
- 3) CHRIST OIL
- 4) SEMEN/VAGINAL FLUID



YOU ARE A STAR

STER-STAR

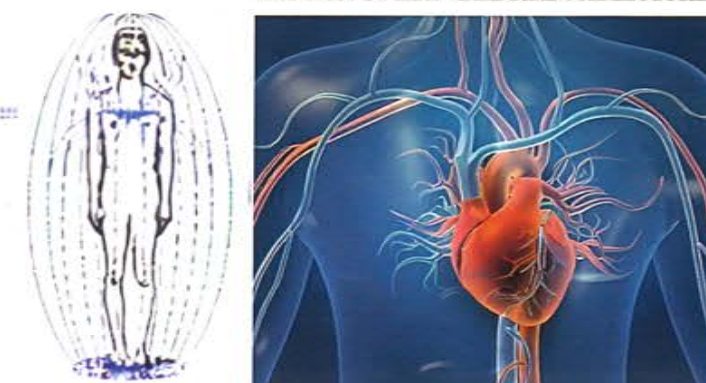
A AND E ARE INTERCHANGABLE

MISTER

MINISTER, SISTER, MONSTER, SUPER STAR, MASTER, FRAUDSTER, SINISTER.

YOU EXIST AS A QUANTUM PHOTON, AKIN TO A CELESTIAL ENTITY, INHABITING A PHYSICAL FORM. WITH OMNISCIANT AWARENESS, YOU ARE DIRECTLY CONNECTED TO THE SOURCE, ESSENTIALLY EMBODYING THE ESSENCE OF A DIVINE ENTITY. HOWEVER, DURING OUR INCARNATION IN THIS REALM, WE UNDERGO A SEPARATION FROM THE SOURCE, EXPERIENCING A LACK OF AWARENESS REGARDING OUR TRUE DIVINE INSIGHTS DUE TO THE PROGRAM ORCHESTRATED BY THE CENTRAL NERVOUS SYSTEM.

THE TREE OF LIFE=CARDIOVASCULAR SYSTEM



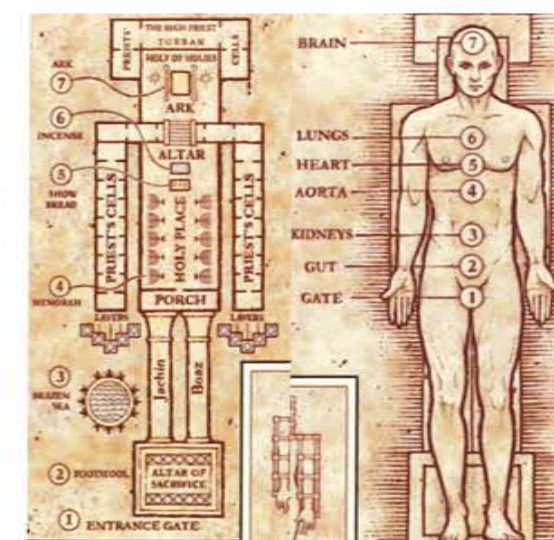
THE CARDIOVASCULAR SYSTEM IS THE TREE OF LIFE BECAUSE IT PROVIDES LIFE TO THE PHYSICAL BODY. GEN 2:9: "THE TREE OF LIFE WAS IN THE MIDST OF THE GARDEN." THE GARDEN IS YOUR BODY, AND THE MIDST IS THE MIDDLE, WHICH IS THE HEART.

THE HEART IS THE CENTRE OF THE BODY'S ELECTROMAGNETIC FIELD, AND AT THE CENTRE OF EVERY TORUS FIELD IS MAGNETISM. MAGNETISM PULSES/RADIATES; THIS IS WHY YOU HAVE A HEARTBEAT. IT IS THE RADIATION OF MAGNETISM THAT CREATES THE BEATING OF YOUR HEART. THE HEART IS 5000X STRONGER MAGNETICALLY THAN THE BRAIN; IT IS THE MOST MAGNETIC ORGAN WITHIN THE BODY. THE HEART IS THE PLACE OF THYNE EMOTIONS; EMOTION IS THE LANGUAGE OF THE UNIVERSE.

THE MAGNETIC PULSE OF THE HEART IS WHAT GIVES LIFE TO THE BODY. ALL THINGS THAT LIVE HAVE TO HAVE A PULSE; IT'S THE UNIVERSAL "BREATH" OF LIFE. WE BREATHE, PULSE, BLINK, SLEEP, LIVE, AND DIE. ALL OF THIS IS THE EXPRESSION OF THE ONE UNIVERSAL BREATH OF LIFE.



THE TEMPLE OF SOLOMON IS YOU
THE BODY IS THE TEMPLE
OF THE SOUL AND MIIND



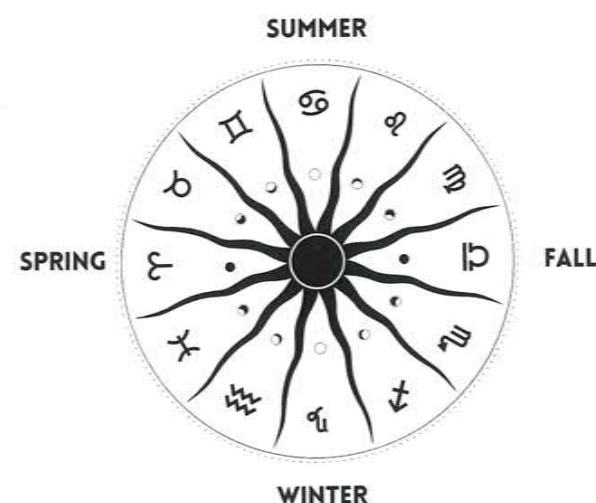
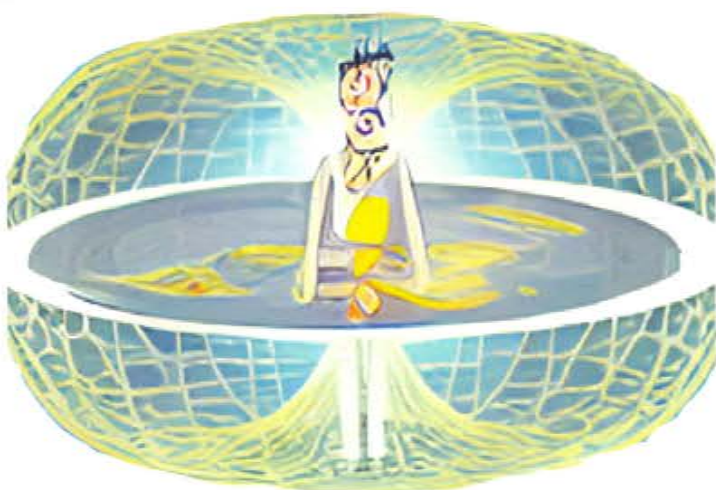
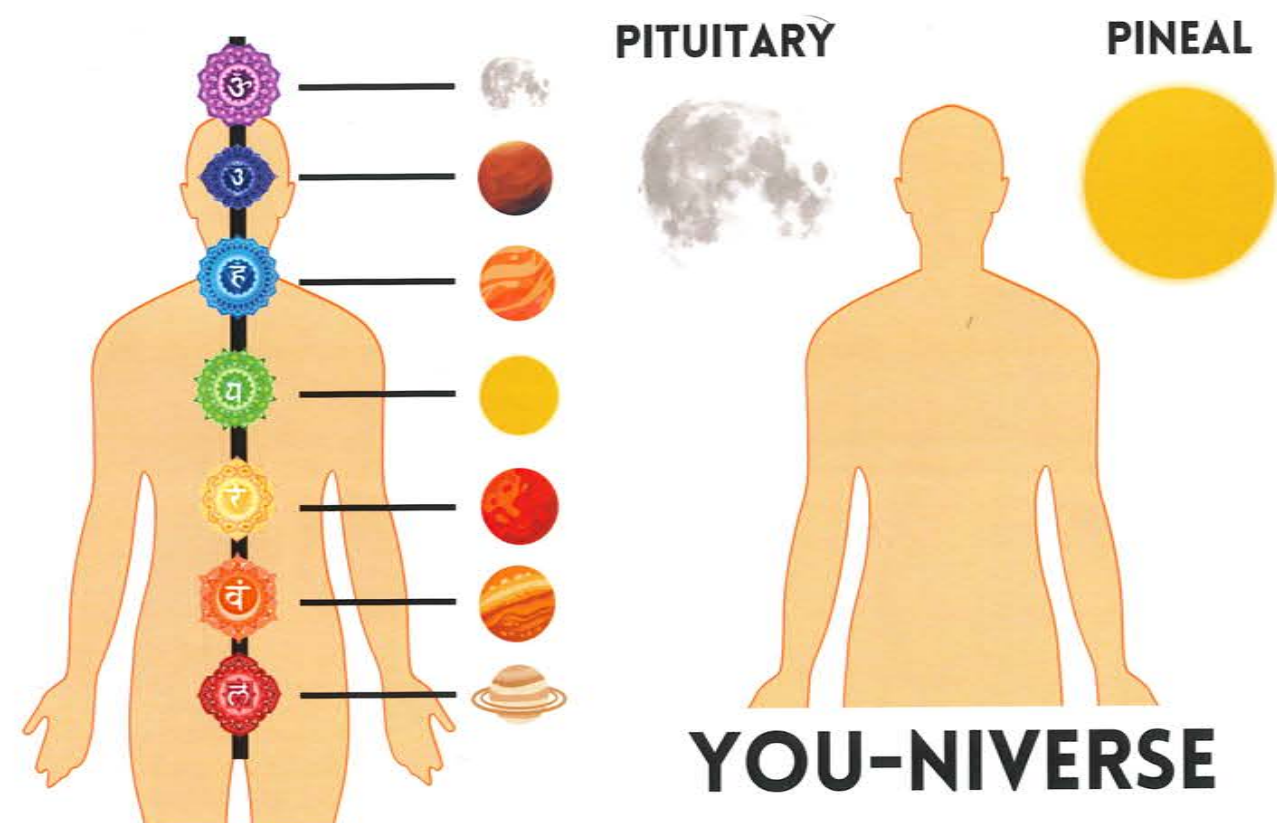
JUST LIKE THE YEAR HAS ITS 4 SEASONS, SO LIKEWISE THERE ARE SEASONS WITHIN THE LIFE OF MAN. HE IS NOT ONLY SUBJECT TO THE WINTER AROUND HIM, BUT THE WINTER IS WITHIN HIM. HE IS NOT ONLY AFFECTED BY THE GREAT CYCLING MOTIONS OF THE EARTH BUT BY SMALLER CYCLES BASED UPON THE FACT THAT THE BODY ITSELF IS A MINIATURE WORLD. A MICROCOSM IN WHOSE CONSTITUTIONS ALL LARGER PROCESSES ARE REPRODUCED IN MINIATURE. THERE IS A SYMPATHY BETWEEN THE LARGER AND MINIATURE CYCLES IN MAN SO THAT ALL OF NATURE IS BOUND TOGETHER IN ONE VAST PATTERN AND GOVERNED BY RULES FOR WHICH THERE ARE NO EXCEPTIONS.

THE SUN'S EXALTATION IN CANCER, INDIVIDUALS OFTEN EXPERIENCE HEIGHTENED CREATIVITY, HAPPINESS, AND ENERGY. THIS ASTROLOGICAL ALIGNMENT IS OCCURRING WITHIN US ASWEL AS OUTSIDE OF US. CONVERSELY, WHEN THE SUN IS IN A WEAKENED STATE IN CAPRICORN, ITS IMPACT IS THOUGHT TO EXTEND TO MENTAL, PHYSICAL, AND SPIRITUAL ASPECTS, POTENTIALLY LEADING TO CHALLENGES IN THESE AREAS.

PSALM 82:6-7 KJV

I HAVE SAID, YE ARE GODS; AND ALL OF YOU ARE CHILDREN OF THE MOST HIGH. BUT YE SHALL DIE LIKE MEN, AND FALL LIKE ONE OF THE PRINCES. WE ARE A SPARK OF GOD. THE WORD MADE FLESH.

THE SOUL SYSTEM IS WITHIN YOU



THERE ARE DIFFERENT LEVELS OF REALITY. THEY ARE NOT SEPARATE; THEY MELT INTO THE PLANE THAT IS ABOVE AND BELOW; IN OTHER WORDS, EACH PLANE IS A PRODUCT OF THE PLANE THAT IS ABOVE. THE HIGHER THE PLANE, THE MORE FLUID/FORMLESS IT BECOMES; THE LOWER THE PLANE, THE MORE MATERIAL AND SOLID IT BECOMES.



MENTAL PLANE

THE MENTAL PLANE IS THE DIMENSION OF THE MIND. THE MIND IS A PART OF THE UNIVERSAL MIND. THEREFORE, THE MENTAL PLANE IS SHARED BETWEEN ALL THE MINDS THAT EXIST. IT IS THE WORLD OF THOUGHTS. THOUGHTS ARE NOT CREATED; THEY ARE RECEIVED BASED UPON WHAT FREQUENCY OUR MIND IS SET TO. THIS IS WHY WE CALL IT A MINDSET. EACH THOUGHT, TOPIC, AND SUBJECT IS A FREQUENCY, AND WHEN YOU SET YOUR MIND TO THESE TOPICS, YOU GAIN THE THOUGHTS THAT ARE ON THAT SIMILAR FREQUENCY. THE WORLD OF THOUGHT IS COMPLETELY FORMLESS. IT IS THE MOST FLUIDIC PLANE.

ASTRAL PLANE

THE ASTRAL PLANE IS WHERE THOUGHTS MANIFEST INTO FORMS. FOR EXAMPLE, THE MENTAL PLANE IS THE THOUGHT OF THE CHAIR, AND THE ASTRAL PLANE IS THE IMAGINATION OF THAT CHAIR. ITS BASICALLY THE WORLD OF IMAGINATION AND MENTAL PICTURES. THE SCREEN WE SEE IN OUR MIND WHEN WE IMAGINE SOMETHING IS THE ASTRAL PLANE. WE CREATE WITH OUR THOUGHTS; THIS IS WHY THOUGHTS ARE THINGS.

THE ASTRAL PLANE IS CREATED OUT OF THOUGHTS MANIFESTING, AND EACH THOUGHT HAS A VIBRATIONAL FREQUENCY. THIS RESULTS IN GENERATING 3 MAIN LEVELS TO IT: HIGHER, MIDDLE, AND LOWER. DEPENDING ON THE VIBRATIONAL FREQUENCY OF THE THOUGHT, MANIFESTING WILL RESULT IN THE THOUGHT FORM MANIFESTING ON THE HIGHER MIDDLE OR LOWER ASTRAL PLANES. THE HIGHER PLANES WILL EMBODY HIGH VIBRATIONAL THOUGHTS LIKE LOVE AND JOY, AND THE LOWER PLANES WILL BE DEMONIC THOUGHTS LIKE HATE, MURDER, AND LUST.

WHEN WE ASTRAL PROJECT, WE ARE USING OUR MIND TO PROJECT THE SOUL INTO THE ASTRAL PLANE. YOU WILL ONLY SEE AND ENCOUNTER BEINGS THAT ARE ON A SIMILAR FREQUENCY AS YOU. IF YOU OPERATE ON A LOW FREQUENCY, YOU WILL COME ACROSS DEAMONS AND NEGATIVE ENTITIES.

DAEMONS, ANGELS, SPIRITS, AND JINS ARE LIVING WITHIN THE ASTRAL PLANE. THEY ARE BASICALLY ENTITIES THAT HAVE NO PHYSICAL BODY. ELEMENTALS ARE SPIRITS OF THE 4 ELEMENTS; FOR EXAMPLE, THERE ARE SPIRITS OF FIRE, WATER, EARTH, AND AIR.

ETHERIC PLANE

THE ETHERIC PLANE IS THE WORLD OF ENERGY, ELECTRICITY AND MAGNETISM. IT IS THE 5TH ELEMENT, ALSO KNOWN AS SPIRIT OR AETHER. THE ETHER IS A SUBSTANCE THAT HAS ONE FOOT IN THE PHYSICAL WORLD AND ONE FOOT IN THE ASTRAL WORLD. ETHER IS WHERE WE GET THE WORD EITHER FROM. EITHER IS CONNECTING TWO SCENARIOS IN LANGUAGE, FOR EXAMPLE, "I EITHER SUPPORT MANCHESTER UNITED OR LIVERPOOL" THE ETHER IS THE SAME THING, CONNECTING TWO TWO PLANES TOGETHER. THE WORD TOGETHER HAS THE WORD ETHER WITHIN IT. ITS JOINING TWO PLANES.

THERE ARE ALSO ETHERIC ENTITIES THAT LIVE AMONGST US, LIKE GOBLINS, GNOMES, AND TROLLS. THEY ARE ENTITIES THAT HAVE THE ABILITY TO MATERIALIZE OR STAY IN THE ASTRAL BODY AT THEIR WILL. THEY CAN CHOOSE WHETHER TO BE PHYSICAL OR NON-PHYSICAL. THIS IS WHERE WE GET THE MYTHS OF TROLLS, FAIRIES, GNOMES AND GOBLINS FROM. THEY ARE VERY SECRETIVE BEINGS AND DO NOT LIKE TO BE SEEN BY HUMANS.

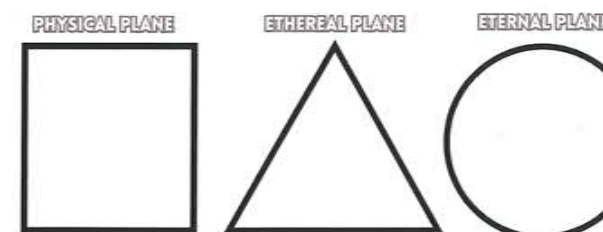
PHYSICAL PLANE

THE PHYSICAL PLANE IS THE WORLD OF MATTER. IT IS THE WORLD GOVERNED BY THE 5 ELEMENTS. IT IS THE WORLD OF EFFECT. EVERYTHING WE EXPERIENCE AND VISUALLY SEE WITH THE TWO EYES IS THE EFFECT OF THE HIGHER PLANES ABOVE. THIS IS WHERE WE GET THE SAYING ABOVE, SO BELOW. YOU CHANGE THE HIGHER PLANES OF EXISTENCE; YOU CHANGE THE PHYSICAL PLANES. THIS IS WHY MAGIC IS INDEED REAL. MAGICIANS AND OCCULTISTS DO HAVE METHODS TO HAVE CONTACT WITH THESE ASTRAL AND ETHERIC ENTITIES, WHICH THEN HAVE THE ABILITY TO MANIPULATE THE PHYSICAL PLANE.



LEONARDO DA VINCI IS SYMBOLISING AS ABOVE SO BELOW. LOOK UP BECAUSE THAT THE ROOT CAUSE. THERE IS NO POINT IN LOOKING DOWN HERE BECAUSE THE PHYSICAL PLANE IS THE WORLD OF EFFECT; WHATEVER YOU SEE AND EXPERIENCE IS THE EFFECT OF YOUR MIND. SO LOOK UP AT THE CAUSE.

CHANGE YOUR MIND YOU CHANGE YOUR REALITY. AS WITHIN SO WITHOUT.



THE ETHEREAL PLANE IS IN CONSTANT ROTATION WITH THE PHYSICAL PLANE THROUGH RHYME, KARMA, POLARITY, AND GENDER. THE CIRCLE IS NEVER ENDING; IT HAS NO BEGINNING OR END, ITS ETERNAL. IT IS THE EXPANSIVENESS OF ALL THINGS.

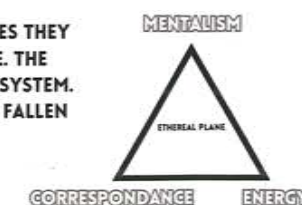


THE TWO MASONIC PILLARS SYMBOLIZE THE NUMBER 11. IT IS THE MIRRORING OF REALITIES WITHIN THE PLANES OF EXISTENCE. WHATEVER YOU DO IN THE ASTRAL PLANE WILL MANIFEST INTO THE PHYSICAL WORLD; ITS LIKE A MIRROR. THIS IS WHY YOU ALWAYS SEE TWO PILLARS IN THE MASONIC ARTWORK.

ASTRAL STAR

THE STARS ARE NOT PHYSICAL PLACES THEY ARE PORTALS TO THE ASTRAL PLANE. THE STARS ARE THE START OF THE SOUL SYSTEM. WE ARE A STAR WRAPPED IN FLESH (FALLEN ANGLE OF LIGHT (FALLEN ANGEL)).

ASTRONOMY
ASTRO=ASTRAL
SPACE IS FAKE



THE ASTRAL PLANE EXISTS ALONGSIDE THE PHYSICAL REALM, COMPRISING BOTH A DIVINE SOLAR LEVEL AND A LOWER LUNAR LEVEL. THE DIVINE LEVEL HOLDS THE BLUEPRINTS FOR ALL THINGS, WHILE THE LOW LEVEL IS THE INITIAL SPHERE THE SOUL REACHES AFTER DEATH. THE ASTRAL PLANE LACKS A NATURAL LANDSCAPE, APPEARING WHITE AND FORMLESS, IT CONSISTS OF ASTRAL MATTER. THIS SUBSTANCE CAN BE MAGICALLY MANIPULATED, AKIN TO PROTO-MATTER, TO CREATE THOUGHT FORMS. OBJECTS CREATED ON THE ASTRAL PLANE CAN EVENTUALLY MANIFEST IN THE PHYSICAL REALM.

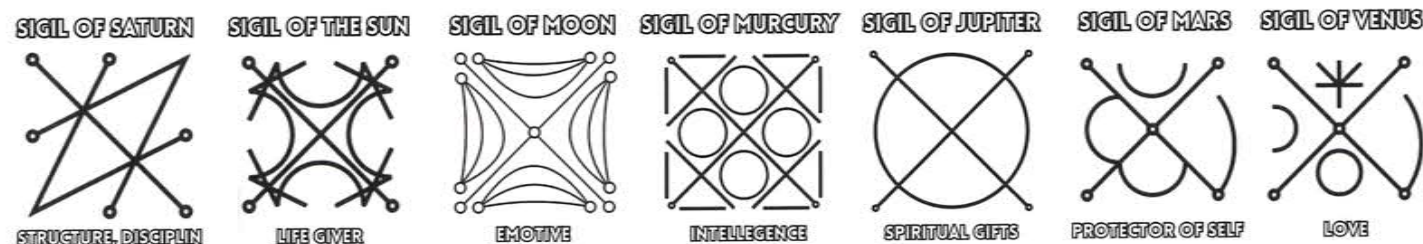
THE ASTRAL PLANE IS MADE OUT OF MENTAL THOUGHTS MANIFESTING INTO ASTRAL MATTER. THE THOUGHTS WE THINK ARE ACTUALLY THINGS HENCE WHY WE SAY THE FAMOUS SAYING "THOUGHTS ARE THINGS". THE MORE MENTAL POWER WE GIVE A THOUGHT THE MORE IT MANIFESTS INTO THE ASTRAL PLANE.

SIGILS AND SYMBOLS

A SIGIL IS A MAGICAL SYMBOL USED IN ESOTERIC PRACTICES (MAGIC), OFTEN SERVING AS A PICTORIAL REPRESENTATION OR SIGNATURE OF A DEITY OR SPIRIT, SUCH AS AN ANGEL OR DEMON. THE TERM "SIGIL" IS ROOTED IN THE LATIN WORD "SIGILLUM," WHICH TRANSLATES TO "SEAL."

THE THOUGHTS WE FOCUS ON CAN MATERIALIZE IN THE FOURTH DIMENSION. IF WE CONSISTENTLY HOLD ONTO A PARTICULAR THOUGHT, IT TRANSFORMS INTO AN ASTRAL FORM. THE MORE EMOTIONAL ENERGY WE INVEST, THE STRONGER IT GETS. THIS PRINCIPLE APPLIES TO SIGILS TOO. TAKE CORPORATE LOGOS, LIKE NIKE'S SWOOSH, FOR INSTANCE. OVER YEARS, MILLIONS OF MINDS HAVE GIVEN IT MENTAL ATTENTION AND EMOTIONAL ENERGY. THE SYMBOL CARRIES AN ASTRAL ENERGY CREATED BY THE COLLECTIVE PERCEPTION OF THE MASSES, WHICH CAN BE EITHER POSITIVE OR NEGATIVE.

WEARING SIGILS CAN EITHER BENEFIT US OR NEGATIVELY IMPACT US DEPENDING ON WHAT SIGILS WE WEAR AND KEEP IN OUR EYE SIGHT. THE PLANETARY GODS ARE NOT PLANETS. THEY ARE 7 COSMIC ENERGIES THAT GIVE OFF THEIR UNIQUE ENERGY AND QUALITIES TO ALL THAT IS UPON THE FACE OF THE EARTH. WEAR THERE SIGILS IF YOU WISH TO GAIN THERE VIRTUES.



RELIGION, HIVES MINDS AND ENERGY HARVESTING

THE HOLY BIBLE AND OTHER RELIGIOUS TEXTS ARE CRAFTED IN A WAY THAT RESONATES WITH INDIVIDUALS AT DIFFERENT LEVELS OF UNDERSTANDING. A CHILD READING THESE SCRIPTURES MIGHT GAIN A SIMPLE, GENERIC PERCEPTION, EMPHASIZING LOVE AND KINDNESS. HOWEVER, THOSE VERSED IN OCCULT TEACHINGS OR ASTROLOGY MAY DISCERN DEEPER, METAPHYSICAL CODES WITHIN THE TEXT, HIGHLIGHTING THE SUBJECTIVE NATURE OF INTERPRETATION BASED ON ONE'S AWARENESS AND REALIZATION.

DIRECTING THOUGHTS, ENERGY, AND ATTENTION TOWARDS THE DEITY "JESUS CHRIST" BRINGS FORTH AN ENTITY WITHIN THE ASTRAL PLANE. ORGANIZED RELIGION FUNCTIONS AS AN ENERGY-HARVESTING TOOL FOR ENTITIES WITHIN THE ASTRAL REALM. INSTEAD OF ADVOCATING WORSHIP, WE SHOULD BE SEEKING TO EMBODY THE QUALITIES ASSOCIATED WITH JESUS IN OUR LIFE.

THOSE IN POSITIONS OF POWER ARE ORCHESTRATING A COLLECTIVE CONSCIOUSNESS OR HIVE MIND FOR THE MASSES. THE INTENT IS TO ESTABLISH A GLOBAL RELIGION, UNIFYING BELIEF SYSTEMS AND LEADING TO THE SUMMONING OF A DEMON WITHIN THE ASTRAL PLANE. BLACK MAGICIANS OFTEN FOCUS ON THE ASTRAL PLANE IN THEIR WORK, AS IT IS LINKED TO THE PHYSICAL PLANE THROUGH THE SUBCONSCIOUS AND INTUITION.



EVENTS OCCURRING IN THE ASTRAL REALM HAVE A DIRECT IMPACT ON THE PHYSICAL PLANE, AND CONVERSELY, ACTIONS IN THE PHYSICAL WORLD REVERBERATE IN THE ASTRAL. THE NUMERICAL REPRESENTATION OF 11 SYMBOLIZES THE MIRRORING EFFECT, HIGHLIGHTING THE INTERCONNECTEDNESS AND REFLECTION OF REALITY BETWEEN THESE PLANES OF EXISTENCE.

ADDITIONAL INFO BEFORE YOU ASTRAL PROJECT

- THE ASTRAL PLANE IS THE 4TH DIMENSION; IT'S THE UNSEEN OF WHAT WE SEE
- IT IS WHERE THOUGHT FORMS EXIST (MENTAL IMAGES)
- IT CAN BE SEEN ONLY BY OUR MIND'S EYE
- YOU WILL EXPERIENCE BEINGS AND ENTITIES THAT MATCH YOUR FREQUENCY, SO MAKE SURE YOU ARE VIBRATING AS HIGH AS POSSIBLE BEFORE TRYING TO PROJECT.
- EVERYTHING YOU THINK OF WILL MANIFEST INSTANTLY IN THE ASTRAL PLANE (4TH DIMENSION)
- YOUR VISION IN THE ASTRAL PLANE WILL NOT BE VERY CLEAR WHEN YOU FIRST ASTRAL PROJECT. YOU HAVE TO WORK ON STRENGTHENING IT.

YOU CREATE DEMONS

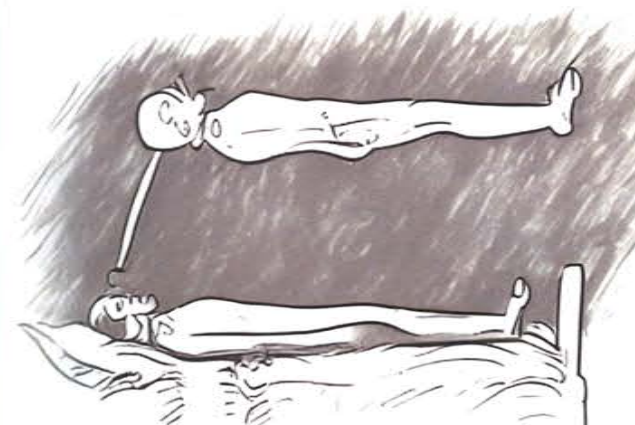
- THE IDEAS WE MENTALLY ENTERTAIN CAN TAKE FORM IN THE 4TH DIMENSIONAL PLANE. BY ENTERTAINING NEGATIVE THOUGHT FORMS FOR LONG PERIODS, THE EMOTIONAL POWER WE GIVE THIS THOUGHT CAN MANIFEST INTO A DEAMON. EVERY SINGLE MENTAL ADDICTION YOU HAVE IS SOME DEAMON YOU CREATED WITHIN THE ASTRAL PLANE. IT GROWS THE MORE EMOTION (ENERGY IN MOTION) YOU GIVE IT.
- THE WORD DEAMON HAS MON IN IT, WHICH MEANS MOON. MOON IS MIND, WE CREATE DEAMONS WITH OUR MINDS.

HOW ASTRAL PROJECTION WORKS

- YOUR MIND IS THE PROJECTOR OF YOUR SOUL. YOUR SOUL IS THE EXPERIENCER (OBSERVER). WHEN YOU ASTRAL PROJECT, YOU ARE USING YOUR MIND TO PROJECT THE SOUL OUT OF THE PHYSICAL BODY (PHYSICAL WORLD) INTO THE ASTRAL PLANE WHERE THERE ARE NO LIMITATIONS OF TIME AND SPACE.
- WHEN YOU "DREAM," YOUR MIND IS PROJECTING THE SOUL INTO ANOTHER REALITY WHILE THE PHYSICAL BODY IS RESTING.

PRACTICES FOR ASTRAL PROJECTION

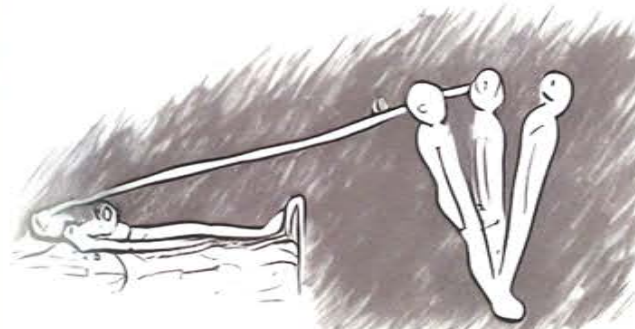
- LIE DOWN FLAT WITH NO BODY PARTS TOUCHING
- REST EVERY SINGLE MUSCLE AND BE AS STILL AS POSSIBLE
- CLOSE YOUR EYES
- BREATHE DEEP IN THROUGH THE NOSE AND SLOWLY OUT THE MOUTH
- MEDITATE UNTIL YOU HAVE LOST ALL DESIRES AND THE MIND IS EMPTY OF THOUGHTS
- THEN FOCUS YOUR ATTENTION ON THE MIDDLE OF YOUR BRAIN (PINEAL GLAND)
- DO THIS UNTIL YOU START TO FEEL TINGLING SENSATION ALL OVER THE BODY
- THE TINGLING SENSATION IS YOUR ENERGY BODY (ETHERIC BODY) BEING AWAKENED
- NOW IMAGINE YOURSELF PULLING A ROPE UP INTO THE SKY
- YOU MAY FEEL YOURSELF BEING LIFTED OUT OF THE BODY; DO NOT BE SCARED
- KEEP DOING THIS EXERCISE UNTIL YOU GAIN THE ABILITY TO LEAVE THE WHOLE BODY AND DISCOVER THE ASTRAL PLANE



WHEN SUCCESSFULLY ASTRAL PROJECTING AND DESIRING TO RETURN TO YOUR PHYSICAL BODY, THE PROCESS INVOLVES A SIMPLE ACT OF INTENTION. BY DIRECTING YOUR THOUGHTS TOWARD REUNITING WITH YOUR PHYSICAL FORM AND FOCUSING ON THE IDEA OF RETURNING, YOU CAN INITIATE A SWIFT TRANSITION, EFFECTIVELY GUIDING YOURSELF BACK INTO YOUR BODY.



JESUS NEVER WALKED ON WATER. IT IS SYMBOLIC FOR LEAVING THE PHYSICAL BODY. THE WATER IS THE ETHERAL PLANE, WHICH IS THE VEIL BETWEEN THE PHYSICAL WORLD AND THE ASTRAL WORLD. JESUS WAS WALKING ON TOP OF THE VEIL OF THE ETHER (ASTRAL PROJECTING).



WHEN JESUS TEACHES PETER TO "WALK ON WATER," HE IS TEACHING HIM NOT TO BE SCARED OR ELSE YOU WILL FALL BACK INTO THE WATER. THIS IS SYMBOLIC OF WHEN YOU ARE ASTRAL PROJECTING. WHEN YOU START TO FEAR WHEN YOU'RE PROJECTING, YOU WILL BE SUCKED BACK INTO YOUR BODY.

MATHEW 14:29
"HE WAS AFRAID AND, BEGINNING TO SINK, CRIED OUT, 'LORD, SAVE ME!'"

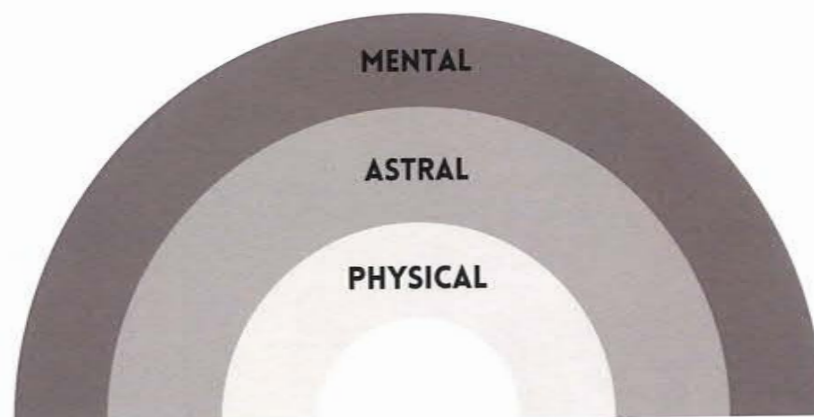
MERKABA

MER=LIGHT
KA=SPIRIT
BA=BODY



CELESTIAL SPHERE TO
PORTRAY DIFFERENT
PLANES OF REALITY

VEHICLE OF ASCENSION



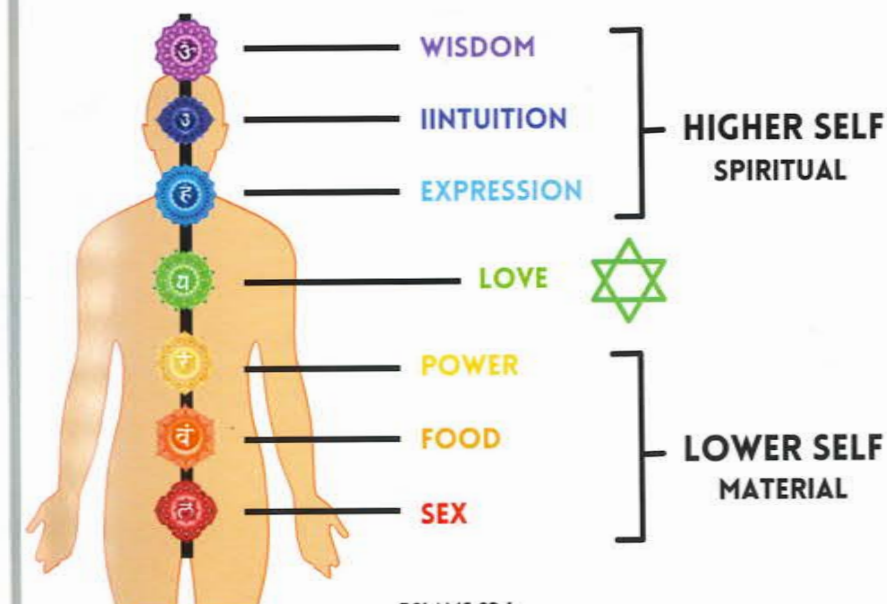
NEUTRALIZING THE DUALITY OF SELF BY COMBINING THE UPPER AND LOWER SELF. YOU ARE A SOUL THAT EXPERIENCES DIFFERENT REALITIES WITHIN THE MULTI VERSE. IN EACH PLANE YOU TAKE ON DIFFERENT BODIES. YOUR AIM IS TO BECOME A MULTI DIMENSIONAL CREATURE AND NOT TO BE BOUND TO JUST ONE REALITY.

HUMANS POSSESS A MORE ADVANCED CONSCIOUSNESS THAT MARKEDLY DIFFERS FROM THAT OF ANIMALS. ANIMALS OPERATE WITH A ONE-WAY CONSCIOUSNESS, DRIVEN BY INSTINCT AND LACKING SELF-AWARENESS. UNLIKE ANIMALS, HUMANS EXHIBIT A TWO-WAY CONSCIOUSNESS, ALLOWING US TO BE SELF-AWARE AND ENGAGE IN INTROSPECTIVE ANALYSIS OF OUR PHYSICAL, SPIRITUAL, AND MENTAL ASPECTS. THIS DUAL AWARENESS IS OFTEN CONSIDERED "DIVINE," WHERE ALTERING THE 'N' TO 'D' IN "DIVINE" FORMS THE WORD "DIVIDE," UNDERSCORING THE INHERENT DUALITY IN OUR CONSCIOUSNESS.

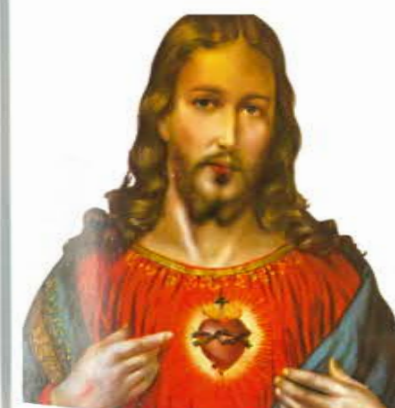
CONSCIOUSNESS IS A STATE OF ONENESS, TRANSCENDING GENDER AND FORM, A DIVINE SPARK OF THE DIVINE. THIS CELESTIAL CONSCIOUSNESS EXISTS BEYOND THE CONFINES OF THE PHYSICAL WORLD, EARTH. WITHIN EACH HUMAN, A DUAL NATURE IS INHERENT: A HIGHER SELF AND A LOWER SELF (EGO), REPRESENTING THE SPIRITUAL AND PHYSICAL ASPECTS, RESPECTIVELY.

MAN IS A COMPOSITION OF BOTH MATTER AND SPIRIT, AND THE QUEST FOR BALANCE IS ESSENTIAL; OTHERWISE, THE MANIFESTATION OF CHAOS ENSUES. THE EGO, THE EARTHLY AND BODILY PERSONALITY, IS THE PHYSICAL NATURE OF THE SELF. IT IS AN IDENTITY SHAPED BY THE MIND THROUGH EXPERIENCES AND ACCUMULATED KNOWLEDGE OVER THE YEARS. THE EGO, ABSENT DURING TODDLER YEARS, SUBTLY ACKNOWLEDGES ITS MORTALITY, LEADING TO IMPATIENCE, GREED, AND LUST. TO CONTEXTUALIZE, THE BODY/EGO IS THE INTERNAL VOICE PUSHING FOR THE RELEASE OF SEXUAL ENERGY AND THE PURSUIT OF FLEETING SENSATIONS, EVEN WHEN THE HIGHER SELF ADVOCATES OTHERWISE.

IN CONTRAST, THE HIGHER SELF IS DIVINE, GODLY, AND ETERNAL. IT REFLECTS THE ESSENCE OF THE INDIVIDUAL DURING EARLY YEARS, BEFORE THE EGO'S FORMATION. THE HIGHER SELF EMBODIES LOVE FOR EVERYTHING AND EVERYONE. IT SERVES AS THE GUIDING VOICE WITHIN, URGING ONE TO DO THE RIGHT THING, SUCH AS RETAINING SEXUAL ENERGY, REFRAINING FROM HARM, AND FOSTERING LOVE FOR OTHERS.



PSALMS 82:6
"I HAVE SAID, YE ARE GODS; AND ALL OF YOU ARE CHILDREN OF THE MOST HIGH".



HEAVEN

EVEN



THE BODY SERVES AS A REFLECTION OF BOTH THE HIGHER AND LOWER ASPECTS OF THE SELF. THE LOWER SELF, ASSOCIATED WITH DESIRES SUCH AS LUST, GLUTTONY, AND THE PURSUIT OF POWER, IS MANIFESTED IN THE BOTTOM HALF OF THE BODY. CONVERSELY, THE HIGHER SELF IS REPRESENTED IN THE TOP HALF OF THE BODY, ESPECIALLY ABOVE THE HEART.

AIMING TO OPERATE OUR LIVES WITH THE HIGHER PARTS OF THE BODY IMPLIES PRIORITIZING THE VIRTUES ASSOCIATED WITH THE HIGHER SELF. THIS INVOLVES TRANSCENDING BASE DESIRES AND ALIGNING OUR ACTIONS WITH THE QUALITIES OF THE HIGHER SELF, SUCH AS LOVE, COMPASSION, AND SPIRITUAL ELEVATION. BY DOING SO, WE STRIVE FOR A HARMONIOUS BALANCE THAT FOSTERS PERSONAL AND SPIRITUAL GROWTH.

EACH INDIVIDUAL'S CONSCIOUSNESS IS EITHER ALIGNED WITH THE LOWER SELF (HELL) OR THE HIGHER SELF (HEAVEN). THE GOAL IS TO RETURN TO OUR ORIGINAL DIVINE STATE, REMINISCENT OF OUR CHILDHOOD INNOCENCE. LIVING IN HARMONY WITH OUR INTUITION, EMBRACING LOVE, AND SEEKING GENUINE WISDOM SHOULD GUIDE OUR ACTIONS AND CHOICES IN LIFE.

JESUS IS INDICATING THE HEART CHAKRA BECAUSE THE HEART SERVES AS THE EQUILIBRIUM POINT FOR THE SEVEN CHAKRAS. ATTAINING CHRIST CONSCIOUSNESS REQUIRES THE HARMONIZATION OF ALL THE CHAKRAS AND LIVING FROM THE HEART.

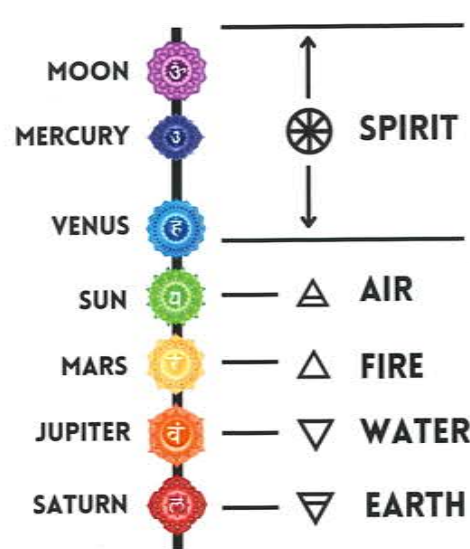
THE TERM "HEAVEN" INHERENTLY CONTAINS THE WORD "EVEN," SIGNIFYING BALANCE. HEAVEN, THEREFORE, REPRESENTS AN INTERNAL STATE OF EQUILIBRIUM. STRIVING FOR BALANCE INVOLVES HARMONIZING BOTH THE PHYSICAL AND MATERIAL ASPECTS OF OUR BEING. IN A STATE OF BALANCE, ONE EXPERIENCES ONENESS AND DOES NOT LEAN TOWARD EITHER EXTREME.

CHAKRAS

CHAKRA IN SANSKRIT MEANS WHEEL. THE CHAKRAS ARE 7 WHEELS OF ENERGY THAT ARE A PART OF THE ELECTROMAGNETIC FIELD WE CALL OUR AURA. THE CHAKRAS ARE LIKE MINI-BRAINS CONTROLLING ALL THE CELLS AND ORGANS WITHIN THAT SECTION OF THE BODY OF THE BODY.

THE 7 CHAKRAS ARE THE 7 SEALS IN THE BIBLE. THE CHAKRAS ARE A PART OF THE ETHERIC BODY AS THEY ARE 7 SEALS THAT BIND YOUR SOUL/SPIRIT TO THE PHYSICAL BODY. THE LOWEST CHAKARA (ROOT CHAKARA) IS THE MOST DENSE/PHYSICAL, AND THE HIGHEST (CROWN CHAKARA) IS SPIRIT/FORMLESS. WE DESCENDED FROM SPIRIT INTO MATTER; NOW WE HAVE TO RETURN TO OUR SPIRIT SELF IN THE CROWN CHAKARA. THE CROWN CHAKARA IS LOCATED JUST ABOVE THE HEAD, OUT OF THE BODY BECAUSE ITS PURE SPIRIT.

OUR TRUE GOD SELF IS HIDDEN BEHIND THE 7 CHAKRAS, AS THE CHAKRAS CAN BE ABUSED OR BALANCED. WHEN WE BALANCE THE VICES OF THE CHAKRAS, WE BUILD A STRONG MIND AND SOUL CONNECTION, WHICH THEN MANIFESTS INTO OUR EXTERNAL WORLD. WHEN THE MIND & BODY MANIFEST THE SOUL/HIGHER SELF IDEAS 24/7, WE BECOME OUR TRUE GOD SELF, AND THERE ARE NO MENTAL OR ETHERIC BLOCKAGES WITHIN OUR DIFFERENT BODIES OF CONSCIOUSNESS.



"144,000 GO TO HEAVEN"

144,000
ADD FIRST 5 PETALS
ROOT=4
SACRAL=6
SOLAR=10
HEART=12
THROAT=16

4+6+10+12=48

THIRD EYE=2 PETALS

48X2=96
96+48=144

CROWN=1000 PETALS

1000X144=144,000HZ

JAHOVAS WITNESS BELIEVE EXACTLY 144,000 FAITHFUL CHRISTIAN WILL GO TO HEAVEN. THIS IS A FREQUENCY YOU NEED TO ACHIEVE IN ORDER TO GO FROM THE ROOT TO THE CROWN CHAKRA (HEAD=HEAVEN)



THERE ARE ACTUALLY 7 VOWELS, AND EACH VOWEL CORRESPONDS WITH ONE OF THE CHAKRAS. WHEN CHANTING THE VOWELS CORRECTLY, IT CREATES THE PHONETIC SOUND OF "OHM". OHM IS KNOWN AS THE SOUND OF CREATION, AND WHEN WE SAY IT, WE ARE ALIGNING THE 7 CREATIONAL ENERGIES WITHIN OUR ETHERIC BODY. EACH CHAKRAS VIBRATES ON A DIFFERENT FREQUENCY, AND YOU CAN LISTEN TO THESE FREQUENCIES TO HELP BALANCE EACH CHAKARA.

MENTAL PLANE = THOUGHTS
ASTRAL PLANE = IMAGINATION
ETHERIC PLANE = ENERGY
PHYSICAL PLANE = MATTER

THE ETHER IS THE 5TH ELEMENT, ALSO KNOWN AS SPIRIT. ITS A SUBSTANCE THAT HAS ONE FOOT IN THE ASTRAL PLANE AND IN THE PHYSICAL PLANE. ETHER IS THE WORD EITHER BECAUSE ITS ON EITHER SIDE. THE CHAKRAS ARE ON THE ETHERIC PLANE, AND WHEN WE UNLOCK THESE CENTRES, WE UNLOCK OUR TRUE SPIRIT FORM.

CHAKRAS



I KNOW
I SEE
I SPEAK
I LOVE
I DO
I FEEL
I AM

HOW TO KNOW YOUR PASSING THROUGH CHAKRAS

ROOT = YOU WILL NO LONGER FEAR AND FEEL STABLE
SACRAL = NO LONGER HAVE LUST/DESIRE FOR SEX
SOLAR = NO LONGER DESIRE FOR FOOD
HEART = NO LONGER HATE ANYTHING/ANYONE
THROAT = NO LONGER HOLD YOURSELF BACK TO EXPRESS YOURSELF
THIRDEYE = HAVE THE ABILITY TO READ PEOPLES ENERGY, INTUITION AND ASTRAL PROJECTION.
CROWN = AT ONE WITH EVERYTHING, NO NEGATIVE TRATES, NO EGO, NO HATE, NO DESIRE FOR MATERIAL THINGS, NO ATTACHMENT TO ANYTHING.

Crown Chakra - Universal Consciousness, All Knowing, Cosmic Connection, The God Source, Enlightenment, Gateway to other Dimensions.
Third Eye - Psychic Abilities, Channeling, Telepathy, Astral Travel, Visions, Connections to Higher Self.
Throat Chakra - Communication, Sound, Vibration, Self-Expression, Listening, Speaking, Writing.
Heart Chakra - Love, Understanding, Trust, Hope, Openness, Compassion, Balance, Forgiveness.
Solar Plexus - Personal Power, Will, Energy, Metabolism, Effectiveness, Self Esteem, Social Identity, Happiness.
Sacral Chakra - Emotions, Relationships, Sexuality, Self Worth, Creativity, Empathy.
Root Chakra - Grounding, Stability, Physical Needs, Security, Survival, Manifestation, Material World.

THE HIGHER 3 CHAKRAS ARE THE HIGHER STATES OF CONSCIOUSNESS WHERE YOUR MIND IS NO LONGER MANIFESTING WHATEVER THE LOWER SELF DESIRES. THE MIND HAS BECOME DISCIPLINED AND CARRIES OUT MORE SPIRITUAL DESIRES LIKE FASTING, MEDITATION, ASTRAL PROJECTION, ENERGY HEALING, AWAKENING THE THIRD EYE & SAVING SEXUAL ENERGY TO ACTIVATE THE KUNDALINI. THE SOUL AND THE MIND HAVE GAINED A STRONG CONNECTION, AND THE MIND IS MANIFESTING WHAT THE SOUL WILLS TO DO.

THE LOWER 3 CHAKRAS ARE THE LOWEST STATES OF CONSCIOUSNESS WHERE YOU IDENTIFY AS THE PHYSICAL BODY (MATTER OVER MIND). THE MIND AND BODY ARE OPERATING IN SURVIVAL MODE, MEANING YOU ARE DOING WHATEVER THE BODY DESIRES. AN EXAMPLE OF THIS IS EATING WHENEVER THE STOMACH RUMBLES, RELEASING SEXUAL FLUIDS WHENEVER YOU FEEL LIKE IT, ETC. THIS STATE OF CONSCIOUSNESS IS MANIFESTING HELL.

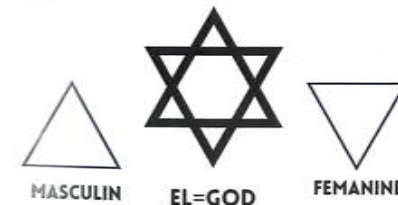
DEUTERONOMY 20:17

"COMPLETELY DESTROY THEM-THE HITTITES, AMORITES, CANAANITES, PERIZZITES, HIVITES AND JEBUSITES-AS THE LORD YOUR GOD HAS COMMANDED YOU"

-GOD SUPPOSEDLY ORDERED FOR THE CANANITES, AMORRITES AND HITTITES TO BE "DESTROYED" BUT AS WE KNOW THAT WOULD BE MURDER WHICH GOD DOES NOT CONDEMN ONTO ANY MAN. -CANANITES, AMORRITES AND HITTITES SYMBOLISE MANS LOWER NATURE AS THEY WERE CANNIBALS AND MURDERERS. -SO THIS IS SYMBOLIC FOR DESTROYING YOUR LOWER/ANIMAL NATURE AND TURNING TO YOUR HIGHER/SPIRIT SELF.

UNBALANCED CHAKRAS

-OVERUSING OR INCORRECT USAGE OF THE ENERGY CENTRES WILL RESULT IN UNBALANCED CHAKRAS, WHICH BLOCK THE FLOW OF ENERGY WITHIN THE ELECTROMAGNETIC FIELD OF THE BODY. THIS RESULTS IN A LOWER FREQUENCY AS YOU ARE PULLING TOO MUCH ENERGY OUT OF YOUR FIELD. -FOR EXAMPLE, IF YOU ARE OVERSEXUAL, YOU ABUSE YOUR SACRAL CHAKARA, WHICH IS WEAKENING YOUR FIELD.



BAPHOMET SYMBOLOGY

THE BAPHOMET/DEVIL HAS A GOAT HEAD TO SYMBOLIZE THE ANIMAL NATURE OF MAN. THE BAPHOMET IS HOLDING THE RIGHT HAND UP FOR THE RIGHT-HAND PATH (ASCENSION) AND THE LEFT HAND DOWN FOR DESCENSION. THE BAPHOMET IS NOT A REAL ENTITY; IT SYMBOLIZES AN INDIVIDUAL'S MINDSET. THE BAPHOMET IS BOTH MALE AND FEMALE, SYMBOLIZING DIVISION AND INVERSION OF GOD'S CREATION.

GOD IS ONENESS, MEANING HE IS GENDERLESS. OUR CONSCIOUSNESS IS GENDERLESS, MEANING WE ARE A SPARK OF GOD; GOD IS CONSCIOUSNESS. WE COME FROM THE ONE, AND WE INCARNATE INTO DUALITY TO GAIN THE KNOWLEDGE OF GOOD AND EVIL.

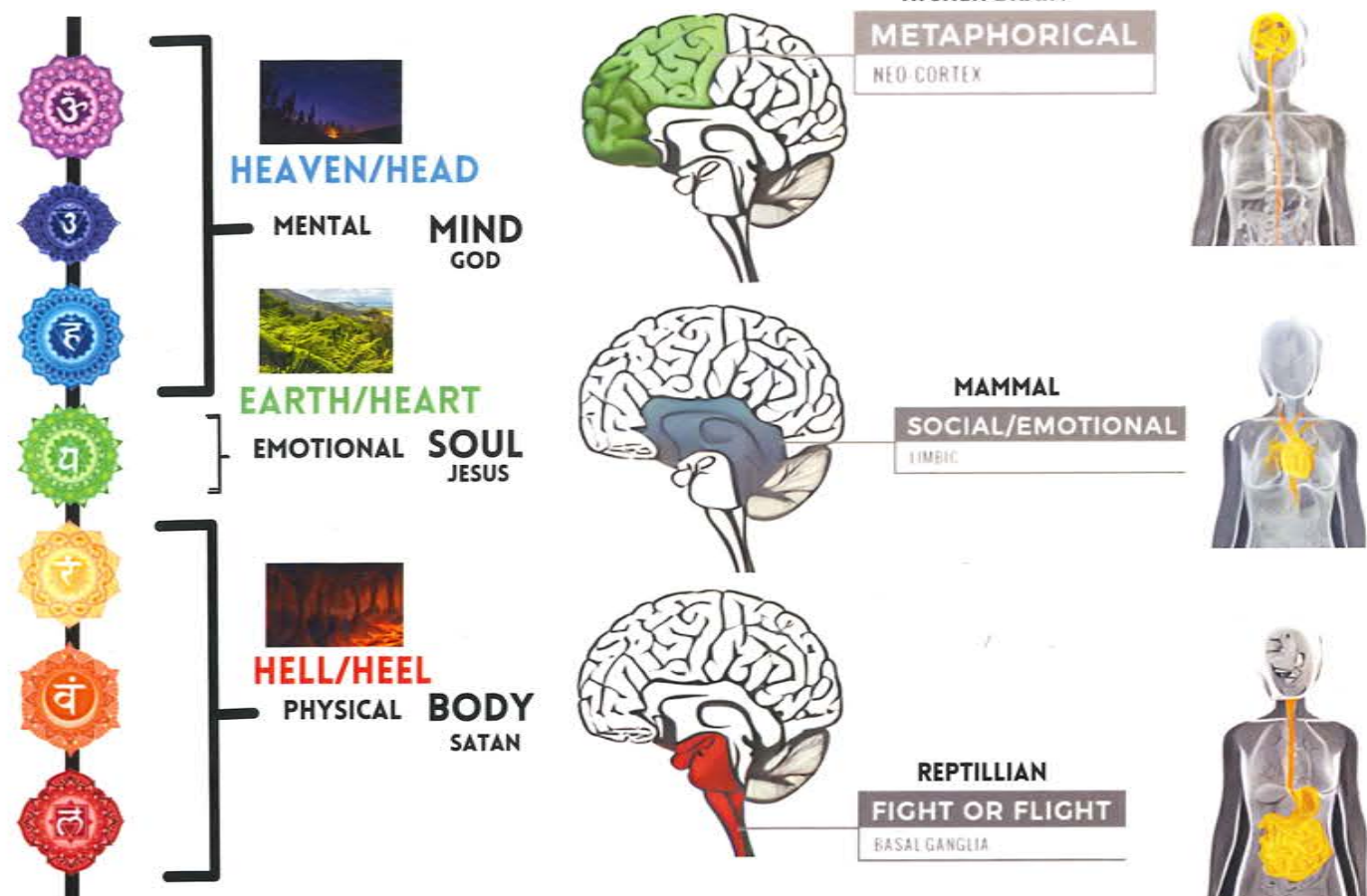
THE CROWN CHAKARA IS THE ONLY CHAKARA LOCATED OUT OF THE PHYSICAL BODY. THIS IS DUE TO IT BEING PURE SPIRIT, MEANING IT IS NOT A PART OF THE DUALISTIC/ PHYSICAL WORLD; IT IS ONENESS.



NOTICE HOW THE MAJORITY OF FAST-FOOD RESTAURANT SYMBOLS ARE RED, ORANGE, OR YELLOW. THIS IS BECAUSE THEY UNDERSTAND THAT 80% OF PEOPLE'S MINDS MANIFEST THE DESIRES OF THE LOWER 3 CHAKRAS. THE MINDS THAT OPERATE ON THEIR LOWER FREQUENCIES WILL BE ATTRACTED TO THE COLOURS OF THEIR LOWER FREQUENCIES. PLUS, THE SO-CALLED "FOOD" THE RESTAURANTS SUPPLY IS KEEPING THEM STUCK IN THE LOWER 3 CHAKRAS (SURVIVAL MODE).

THE WORD HUMAN COMES FROM THE WORD HUE, WHICH MEANS AN ATTRIBUTE OF A COLOUR. EACH ONE OF US OPERATES WITHIN A FREQUENCY, AND THAT FREQUENCY IS A COLOUR WITHIN THE ELECTROMAGNETIC LIGHT SPECTRUM. WE ARE AN ATTRIBUTE OF A SPECIFIC COLOUR BASED ON WHAT OUR MIND IS SETTING OUR FREQUENCY TO. THIS IS WHY WE CALL IT A MINDSET YOUR MIND SETS ITSELF TO VARIOUS FREQUENCIES.

THE 3 BRAINS CONTROL THE 3 SECTIONS OF THE BODY



NOTICE HOW THE LANDSCAPE OF THE EXTERNAL WORLD MATCHES UP WITH THE CHAKRA SYSTEM. LAVA IS UNDER GROUND WHICH IS RED AND CORRESPONDS WITH THE ROOT CHAKARA (HELL). THE SKY IS BLUE AND CAN TURN PURPLE AT NIGHT, WHICH SYNC'S IN WITH THE HIGHER THREE CHAKARAS. THE EARTH IS GREEN, AND THE HEART CHAKARA IS GREEN, AS ABOVE AND BELOW.



THE DEVIL HAS GROUND ANIMAL FEATURES SYMBOLIZING THE LOWER SELF. THE ANGEL HAS WINGS WHICH ARE BIRD FEATURES SYMBOLIZING HIGHER SELF. THE ELITES IN CONTROL HAVE EXTERNALIZED THIS METAPHYSICAL CONCEPT TO JESUS AND SATAN TO MAKE PEOPLE LOOK OUTSIDE OF THEMSELVES. THIS RESULTS IN LACK OF AWARENESS OF THERE OWN CONSCIOUSNESS WHICH THEN CREATES A SOCIETY OPERATING THERE LIVES OUT OF THE LOWER CHAKARAS

Psychological Signs of Blocked Chakras

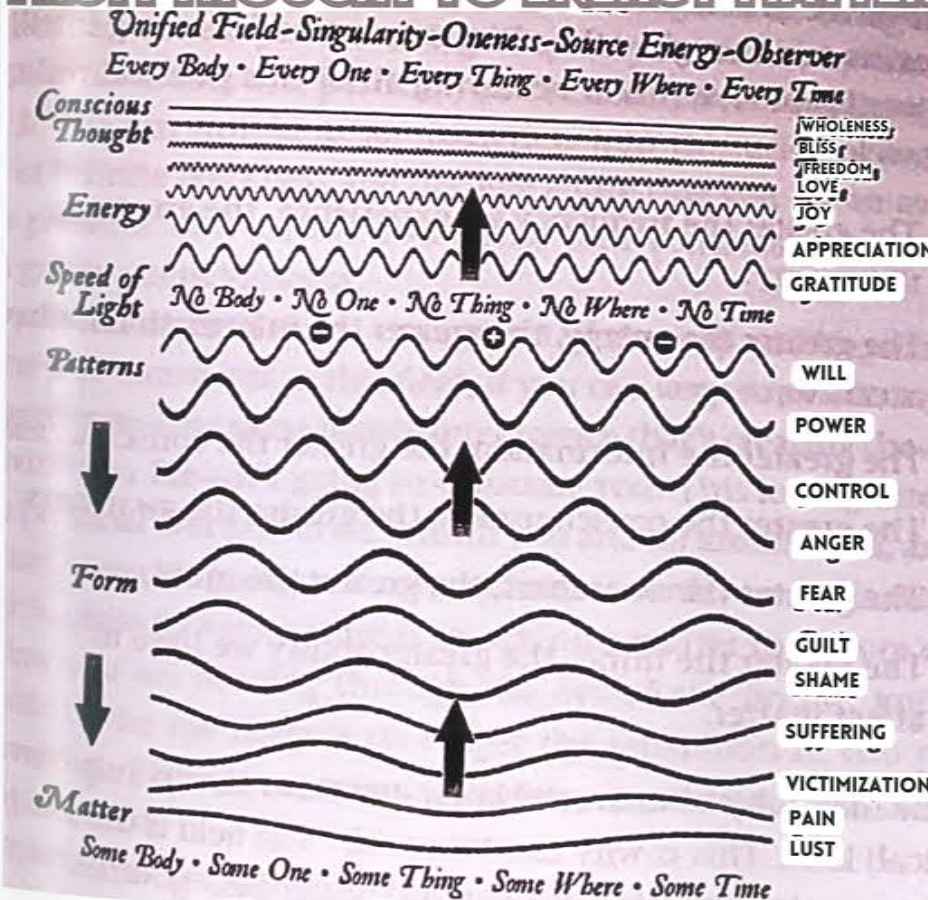


PAGE 243 FIGURE 11:11 FROM THE BOOK "BECOMING SUPERNATURAL"-AUTHORED BY DOCTOR JOE DISPENZA

SIGNS OF BLOCKED ENERGY



FROM THOUGHT TO ENERGY MATTER



SEVEN UP IS TRUTH IN PLANE SITE.

NOTICE HOW LUST IS THE LOWEST VIBRATIONAL EMOTION. THIS IS WHY LUST FOR SEX IS PUSHED UPON US BY THE MUSIC INDUSTRY, ESPECIALLY RAP MUSIC. ANYTHING THAT IS FREE, YOU ARE THE PRODUCT; THIS IS WHY PORN IS FREE BECAUSE IT WASTES YOUR SEED, KEEPING YOU IN THE LOWEST VIBRATIONAL STATE OF LUST.

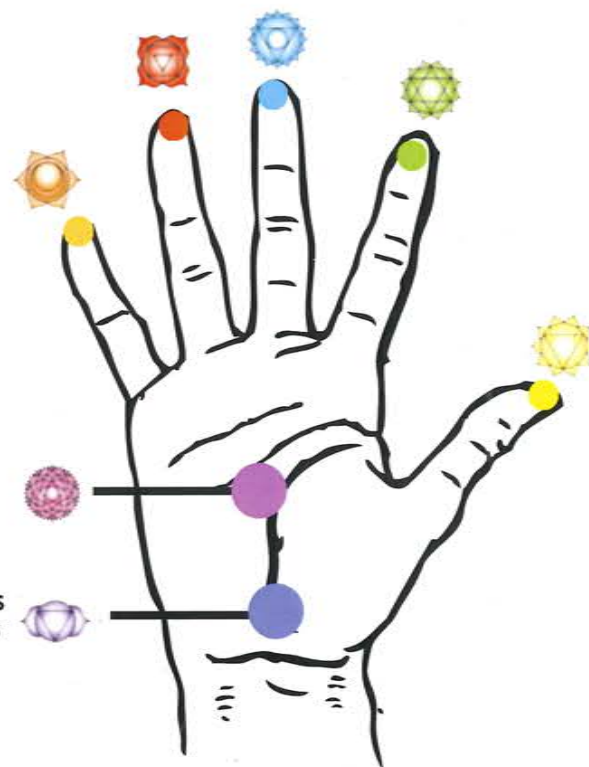
THE 7 CHAKRAS ARE NOT LIMITED TO THE SPINE BUT EXTEND THEIR INFLUENCE TO THE HANDS. THEY MANIFEST IN THE FOLLOWING ASSOCIATIONS:

- MANIPURA (SOLAR PLEXUS) = THUMB.
- ANAHATA (HEART) = INDEX FINGER.
- VISHUDDHI (THROAT) = MIDDLE FINGER.
- MULADHARA (ROOT) = RING FINGER.
- SWADHISTHANA (SACRAL) = FINGER.
- SAHASRARA (CROWN) = PALM
- AJNA CHAKRA (THIRD EYE) = WRIST POINT

THIS ARRANGEMENT RESULTS IN A HARMONIOUS BALANCE ON THE HAND, WHERE THE RING AND LITTLE FINGERS EMBODY FEMININE QUALITIES, WHILE THE THUMB AND INDEX FINGER EXUDE MASCULINE ATTRIBUTES. ADDITIONALLY, A CENTRAL AXIS EXTENDS FROM THE WRIST POINT, PASSING THROUGH THE CENTER OF THE PALM AND REACHING UP TO THE MIDDLE FINGER, SYMBOLIZING THE SPIRIT ELEMENT. THIS CENTRAL AXIS SERVES AS A RECONCILING FORCE FOR THE CONTRASTING GENDER PRINCIPLES.

HAND CHAKRAS SERVE AS A VITAL INTERFACE BETWEEN THE PHYSICAL AND ENERGETIC DIMENSIONS, ALLOWING US TO ENGAGE WITH THE WORLD ON BOTH LEVELS. THE FINGERS FUNCTION AS SENSITIVE RECEPTORS, WHILE THE PALMS ACT AS CONDUITS FOR CHANNELING HEALING ENERGY. YOUR DOMINANT HAND SERVES AS THE SOURCE OF ENERGY EMISSION, WHILE THE NON-DOMINANT HAND ACTS AS THE RECIPIENT.

IN CONTRAST TO THE FEET, WHICH ARE ASSOCIATED WITH THE EARTH ELEMENT AND THE PHYSICAL BODY, THE HANDS CORRESPOND TO THE AIR ELEMENT AND THE REALM OF THE MIND, AS THEY ARE SUSPENDED IN THE AIR BEFORE US. CONSEQUENTLY, THE HAND CHAKRAS WIELD SIGNIFICANT INFLUENCE OVER THE INFORMATION THAT ENTERS OUR CONSCIOUSNESS.



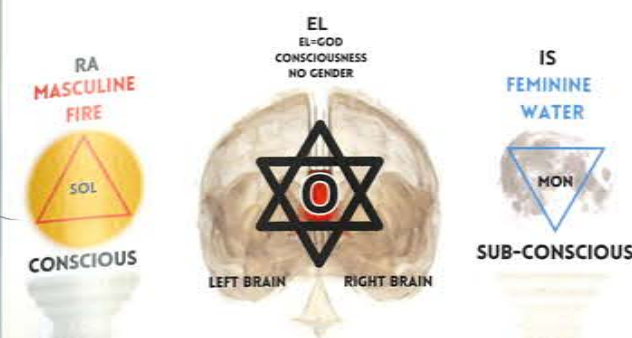
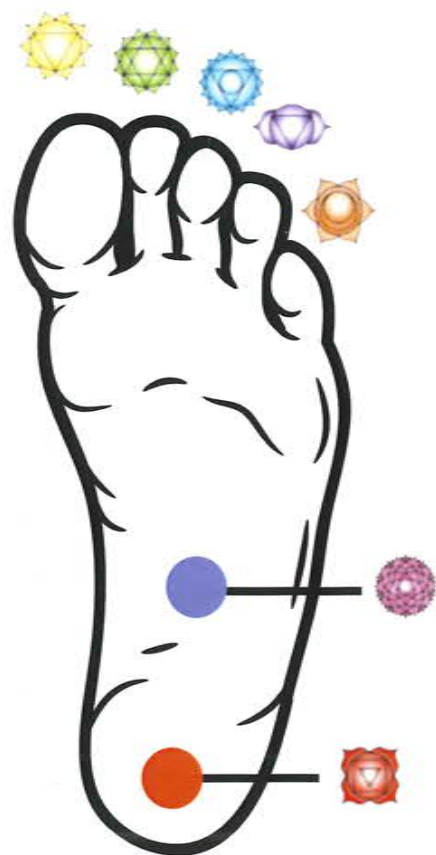
THERE EXISTS A NETWORK OF ENERGY CENTERS KNOWN AS MINOR CHAKRAS IN THE FEET (AS ABOVE SO BELOW). THESE MINOR CHAKRAS PLAY A HUGE ROLE IN FACILITATING A WIDE RANGE OF ENERGY INFLOW INTO THE HUMAN BODY AND CONSCIOUSNESS.

FOOT AND CHAKRAS:

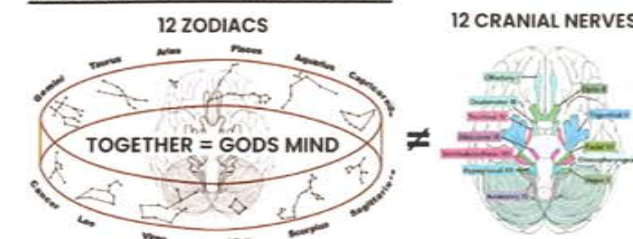
- MANIPURA (SOLAR PLEXUS) = BIG TOE.
- ANAHATA (HEART) = INDEX TOE.
- VISHUDDHI (THROAT) = MIDDLE TOE.
- AJNA (THIRD EYE) = FOURTH TOE.
- SWADHISTHANA (SACRAL) FINDS RESONANCE IN THE LITTLE TOE.
- SAHASRARA (CROWN) = MIDDLE OF THE SOLE.
- MULADHARA (ROOT) = BACK OF THE HEEL.

ONE OF THE PRIMARY FUNCTIONS OF THE TOES IS TO RELEASE AND DISCHARGE ANY SURPLUS ENERGY THAT ACCUMULATES WITHIN THE MAJOR CHAKRAS THROUGH OUR EVERYDAY ACTIVITIES AND BODILY FUNCTIONS. THIS EXCESS ENERGY IS CHANNELLED INTO THE EARTH, FACILITATING A GROUNDING OF OUR CONSCIOUSNESS. WHEN THE MINOR CHAKRAS IN THE FEET OPERATE HARMONIOUSLY AND ARE IN ALIGNMENT WITH THE MAJOR CHAKRAS, IT ESTABLISHES A CONTINUOUS CONNECTION AND A FLOW OF COMMUNICATION BETWEEN THE EARTH'S ENERGY GRIDS AND OUR OWN ENERGIES.

ROOT CHAKRA CORRESPONDS WITH THE EARTH ELEMENT AS ITS THE MOST PHYSICAL/MATERIALISTIC CHAKRA. THIS IS WHY HEEL IS HELL BECAUSE WHEN OUR MIND OPERATES OFF THE ROOT CHAKRA, WE DESIRE, FEAR, AND LACK INSECURITY. IN OTHER WORDS, WE MANIFEST HELL.



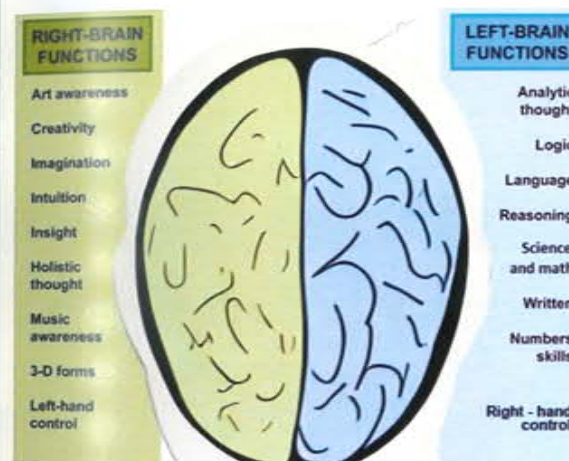
'MANKIND IS GOD MADE FLESH' (macrocosm & microcosm)



-IN THE BIBLE THE HEAD IS REFERRED TO AS THE UPPER ROOM WHERE JESUS MET THE 12 DISCIPLES. THE 12 DISCIPLES ARE THE 12 CRANIAL NERVES IN THE BRAIN WHICH ARE THE 12 ZODIAC SIGNS.



-MOSES CROSSING THE RED SEA IS MOVING YOUR PERCEPTION/AWARENESS INTO THE RIGHT HEMISPHERE OF THE BRAIN. THE RED SEA IS THE CORPUS COLLOSUM, WHICH CONNECTS THE TWO HEMISPHERES OF THE BRAIN. THE RIGHT HEMISPHERE SHOWS THE UNIFIED PERCEPTION OF REALITY. IT IS THE PLACE OF YOUR HIGHER SELF.



RIGHT BRAIN

THE RIGHT BRAIN IS THE FEMANINE ASPECT OF THE BRAIN. IT CREATES A WHOLISTIC PERCEPTION OF REALITY WHERE ALL THINGS ARE UNITED AND ONENESS. IT IS ALSO THE PLACE OF OUR INTUITION, CREATIVITY, AND INSIGHT. FOR EXAMPLE, THIS SIDE OF THE BRAIN VIEWING HUMANS AS ONE UNITED CONSCIOUSNESS.

LEFT BRAIN

THE LEFT HEMISPHERE IS THE ANALYTIC SIDE OF THE BRAIN. IT BREAKS DOWN THE UNITED PERCEPTION OF THE RIGHT HEMISPHERE INTO SINGULAR SEGMENTS. THIS IS IMPORTANT AS IT GIVES US THE ABILITY TO BREAK THINGS DOWN AND MANIPULATE THEM. THE LEFT BRAIN IS THE MASCULINE SIDE, AND IT IS THE PLACE OF THE EGO. THE LEFT BRAIN SEES HUMANITY AS INDIVIDUALS AND NOT UNIFIED LIKE THE RIGHT BRAIN.

SIN IN LATIN IS SINISTER MEANS LEFT
RIGHT = RIGHTIOUS

THE ARK OF THE COVENENT-TWO HEMISPHERES OF THE BRAIN



THE TWO ANGLES COVERING THE COVENENT ARE THE TWO HEMISPHERES OF THE BRAIN COVERING (PROTECTING) THE SACRED CENTRE OF THE BRAIN. THE CENTRE OF THE BRAIN IS THE "MOST HOLY HOUSED" IN THE BIBLE. THIS PLACE IS THE THRONE OF GOD/CONSCIOUSNESS WITHIN THE PINEAL GLAND.

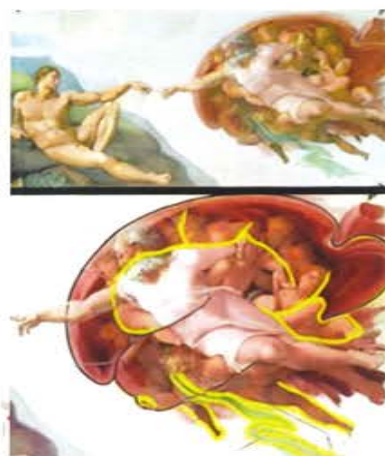
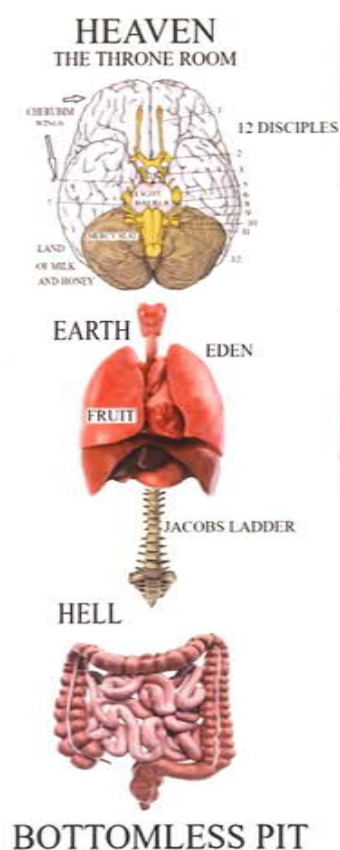
- SPOTIFY, RADIO, APPLE MUSIC, AND ALL MAJOR PLATFORMS ARE TUNED TO 440HZ. 440HZ SHUTS OFF THE RIGHT SIDE OF THE BRAIN, RESULTING IN YOU BEING LEFT-BRAIN DOMINANT. THEY DO NOT WANT YOU TO BE BALANCED OR RIGHT BRAIN DOMINANT DUE TO IT BEING THE CREATIVE, INTUITIVE, AND UNIFIED PART OF THE BRAIN.
- THE ROCKEFELLA FOUNDATION IN THE 1950S CHANGED THE STANDARD MUSIC TUNING FROM 432HZ TO A440HZ.
- THIS IS TO KEEP YOU THINKING LOGICALLY INSTEAD OF CRITICALLY.
- FREQUENCY IS THE ONLY THING THAT ENTERS YOUR TEMPLE WITHOUT CONSENT, AFFECTING YOU NO MATTER WHAT. THIS IS WHY MUSIC IS ONE OF THEIR MOST POWERFUL TOOLS
- INSTEAD, YOU WANT TO LISTEN TO MUSIC/FREQUENCIES IN 432HZ/528HZ/963HZ OR ANY OF THE SOLFEGGIO SCALE FREQUENCIES.

THE SOLFEGGIO SCALE



- 3+9+6=18=9
- 4+1+7=12=3
- 5+2+8=15=6
- 7+4+1=12=3

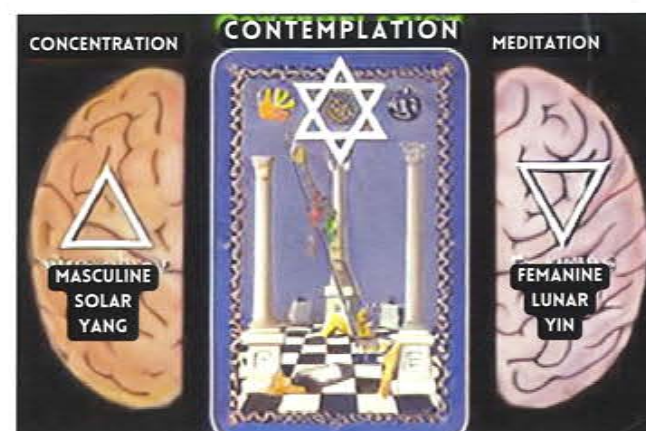
IF YOU ADD ANY OF THE SOLFEGGIO SCALE FREQUENCIES UP THEY ALL ADD TO 3,6 OR 9



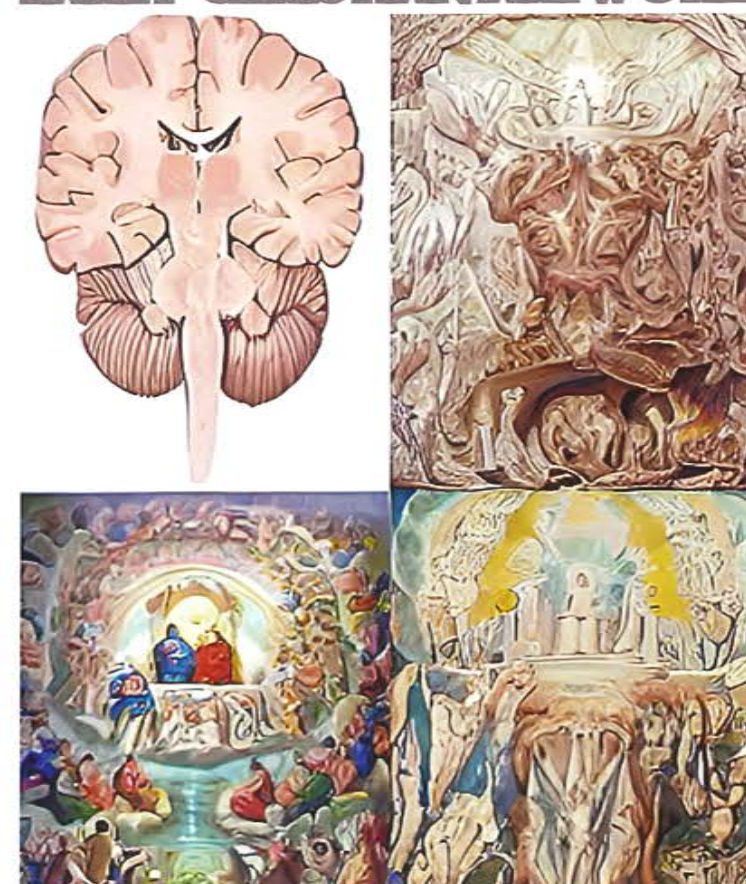
HEAD=HEA=HEAVEN

GOD (HIGHER SELF) IS REACHING/ STRETCHING OVER TO TRY TO CONNECT WITH ADAM (LOWER SELF), AND ADAM IS RELAXED, SHOWING NO EFFORT. THIS PAINTING IS SHOWING ALL YOU HAVE TO DO MOVE UP TO THE HIGHER MIND TO REACH YOUR HIGHER SELF. THE HIGHER SELF IS ALWAYS SPEAKING AND GIVING COMMANDS, BUT THE LOWER SELF DOMINATES. ALL YOU HAVE TO DO IS FOLLOW THE COMMANDS OF THE HIGHER SELF (HIGHER MIND/THOUGHTS).

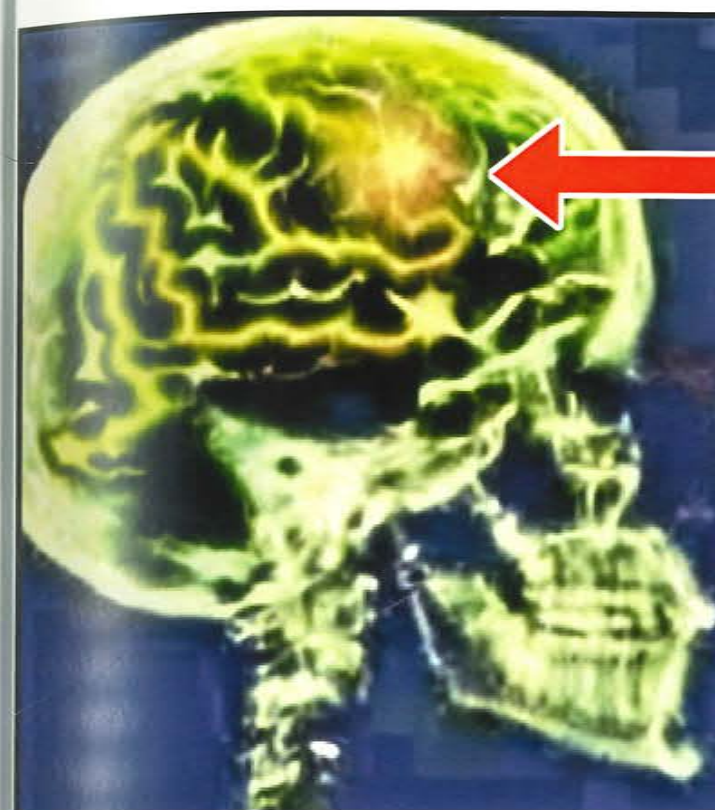
THE HEAD IS HEAVEN BECAUSE IT IS THE PLACE OF CONSCIOUSNESS IN THE CENTRE OF THE BRAIN. THE PINEAL GLAND IS THE PLACE OF THYNE CONSCIOUSNESS, AND IT HAS ACCESS TO THE ASTRAL PLANE.



EARLY CHRISTIAN ARTWORK



The ventral view of the brain, (the brain seen from underneath), shows the clear correspondence between Ganesh and the pons, medulla, and cerebellum. The face of Ganesh corresponds to the pons. The medulla represents the trunk of Ganesh. The roots of the trigeminal nerves represent the eyes of Ganesh. A group of nerves at the pons represent the tusks of Ganesh. The cerebellum constitutes the ears of Ganesh. These structures not only look like Ganesh, but their functions in human physiology correspond to the functions and activities ascribed to Ganesh. (Human Physiology: Expression of Vedic Literature.)



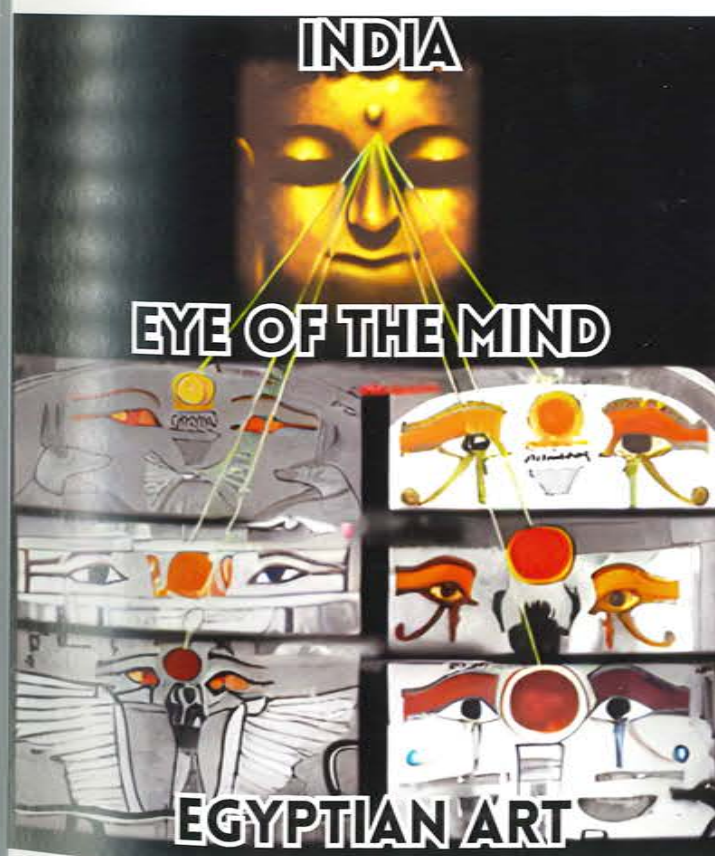
GOD IS HERE

THE SIDES OF THE HEAD REGION ARE REFERRED TO AS THE "TEMPLES."

TEM=PLACE OF WORSHIP
EL=ANCIENT CAANANITE NAME FOR GOD

THE HEAD IS THE TEMPLE OF GOD.

LUKE 17:12 "THE KINGDOME OF GOD IN WITHIN YOU"



THE MIND TRANSCENDS THE CONSTRAINTS OF TIME, SPACE, AND MATTER. AS WE DELVE INTO THE REALMS OF THE MIND, WE ENTER A SACRED DOMAIN AKIN TO THE KINGDOM OF GOD.

MATTHEW 18:9
"IT IS BETTER FOR YOU TO ENTER LIFE WITH ONE EYE, THAN TO HAVE TWO EYES AND BE CAST INTO THE FIERY HELL"

THIS VERSE IS METAPHORICAL FOR US TO BECOME ONES WITH OUR CONSCIOUSNESS/MIND.

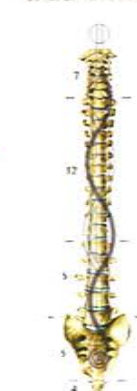
KINGS 6:7 6:8

AND THE HOUSE, WHEN IT WAS BEING BUILT, WAS BUILT OF STONE MADE READY BEFORE IT WAS BROUGHT THERE: SO THAT THERE WAS NEITHER HAMMER NOR AXE NOR ANY TOOL OF IRON HEARD IN THE HOUSE, WHILE IT WAS BEING BUILT. THE DOOR FOR THE LOWEST CHAMBER WAS IN THE RIGHT SIDE OF THE HOUSE: AND THEY WENT UP WITH WINDING STAIRS INTO THE MIDDLE CHAMBER, AND OUT OF THE MIDDLE INTO THE THIRD.

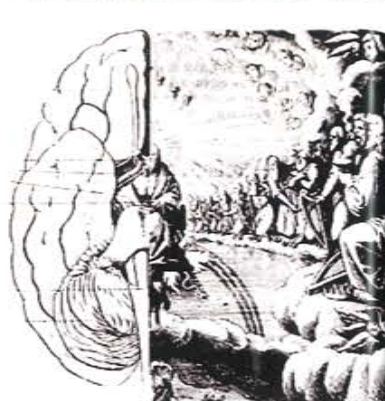
KINGS 6:27

HE PLACED THE CHERUBIM IN THE MIDST OF THE INNER HOUSE, AND THE WINGS OF THE CHERUBIM WERE SPREAD OUT, SO THAT THE WING OF THE ONE WAS TOUCHING THE ONE WALL, AND THE WING OF THE OTHER CHERUB WAS TOUCHING THE OTHER WALL.

"WINDY STAIRS"



BRAIN / THRONE OF GOD



IMMORTAL FLAME OF MIND



EGYPTIAN WINGED "SUN"



POWER OF THE MIND & BRAIN



POWER SYMBOL

THE PINEAL GLAND OR THIRD EYE STANDS OUT AS THE PRIMARY FOCUS OF MANIPULATION AND CONTAMINATION WITHIN THE HUMAN BODY. THIS IS PRIMARILY ATTRIBUTED TO ITS PROFOUND IMPACT ON HUMAN AWARENESS IN SPIRITUAL CONTEXTS. WHEN THE PINEAL GLAND IS SEALED SHUT, THE MIND BECOMES VULNERABLE TO DECEPTION, GRAPPLING TO PERCEIVE BEYOND THE IMMEDIATE FACADE. CONVERSELY, AN UNSEALED PINEAL GLAND FUNCTIONS AS A TRUTH DISCERNMENT TOOL, CAPABLE OF DETECTING THE NUANCED IRREGULARITIES IN FALSEHOODS OR SUBLIMINAL MESSAGES THAT MAY SERVE AS A CONCEALMENT FOR GENUINE INTENTIONS.



CLOSED PINEAL GLAND



AWAKENED PINEAL GLAND

OBSERVER/INNER BEING/ CONSCIOUSNESS

LEFT HEMISPHERE

RIGHT HEMISPHERE



OBSERVER/INNER BEING/ CONSCIOUSNESS

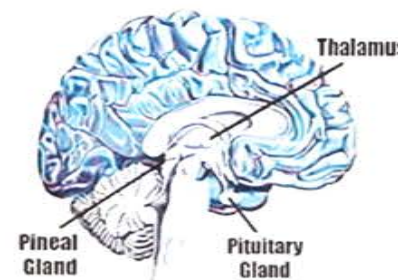


LEFT HEMISPHERE

RIGHT HEMISPHERE



HOLY GRAIL



Pineal Gland

Pituitary Gland



Inner Bird



EGYPTIAN FALCON OF HORUS

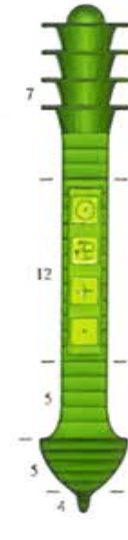
EGYPTIAN DJED PILLAR CENTRAL NERVOUS SYSTEM



TWO HEMISPHERES

CONSCIOUSNESS

SPINE

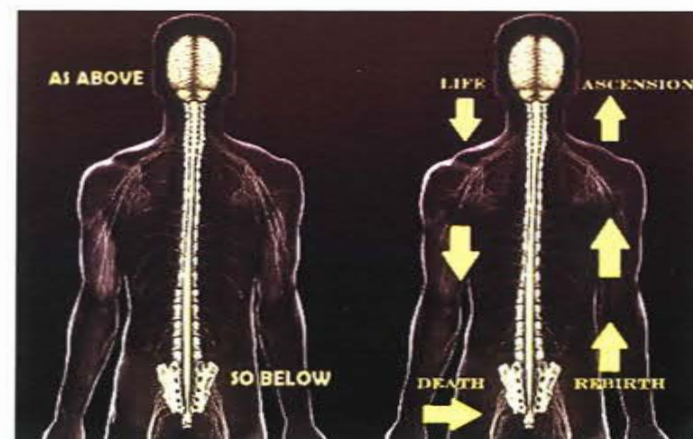


WE ARE MULTIDIMENSIONAL INFINITE CONSCIOUSNESS INCARNATE IN A PHYSICAL BODY FOR A PERIOD OF INTENSE EXPERIENCE ON THE ROAD OF EVOLUTION. WE DON'T 'DIE' BECAUSE WE CANNOT DIE. ENERGY IS CONSCIOUSNESS AND ENERGY CANNOT BE DESTROYED, ONLY TRANSFORMED INTO ANOTHER EXPRESSION OF ITSELF. WHEN YOU REALISE THAT YOU ARE NOT YOUR PHYSICAL BODY, BUT THE INFINITE, ETERNAL CONSCIOUSNESS GIVING LIFE TO THAT BODY, YOUR VISION OF YOURSELF AND YOUR POTENTIAL IS EXPANDED BEYOND MEASURE

THE ESSENCE OF YOUR BEING AND EVERY CELL WITHIN YOUR BODY IS INHERENTLY MULTIDIMENSIONAL. HOWEVER, YOUR CONSCIOUS AWARENESS HAS BEEN CONDITIONED TO NAVIGATE WITHIN THE CONFINES AND CONSTRAINTS OF A THREE-DIMENSIONAL MATRIX.

2 CORINTHIANS 4:18

WHILE WE LOOK NOT AT THE THINGS WHICH ARE SEEN, BUT AT THE THINGS WHICH ARE NOT SEEN: FOR THE THINGS WHICH ARE SEEN ARE TEMPORAL; BUT THE THINGS WHICH ARE NOT SEEN ARE ETERNAL.



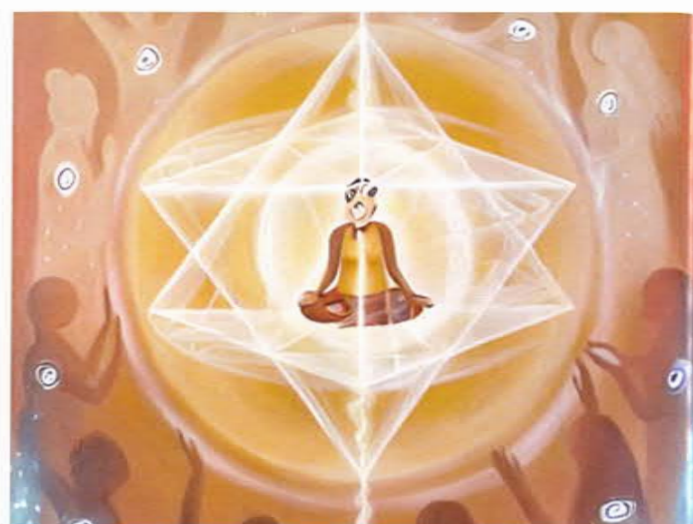
"THE BREATH IS THE ESSENCE OF THE DIVINE, THOUGH ELUSIVE TO OUR SIGHT, TASTE, AND TOUCH. MUCH LIKE FISH OBLIVIOUS TO THE WATER THEY SWIM IN, WE OFTEN MOVE THROUGH THE BREATH AS IF IT WERE NONEXISTENT. UNBEKNOWNST TO US, WE TRAVERSE AN OCEAN OF 'SPIRIT'."

THE HOLY SPIRIT IS INTRICATELY WOVEN INTO EVERY BREATH. IT SERVES AS THE LIFE FORCE THAT ANIMATES OUR PERSONALITY AND STIRS OUR EMOTIONS. UPON OUR FIRST INHALE AT BIRTH, IT GRACES US, AND WITH OUR FINAL EXHALE AT DEATH, IT GRACEFULLY DEPARTS. THE TERM 'SPIRIT' FINDS ITS ROOTS IN THE LATIN WORD 'SPIRARE,' MEANING BREATH. THUS, IT IS AN UNDENIABLE TRUTH THAT 'BREATH' AND 'SPIRIT' ARE SYNONYMOUS."

GENESIS 2:7 "GOD BREATHES LIFE INTO THE NOSTRILS OF MAN".



Y=10
(FIRE) RE
YH=15
(WATER) NUT
YHW=21
TEFNUT
YHWH=26
(EARTH) GEB
2+6=8
YHWH is YaHuWaH (Man = Mind) or/and YaHaWaH (Womb Man = Universal Mind)



RESURRECTION

RES/RAS/ROSH/RS = HEAD
ERECTION=SEXUAL STIMULATION
RAISING SEXUAL ENERGY FROM
THE ROOT TO CROWN CHAKARA

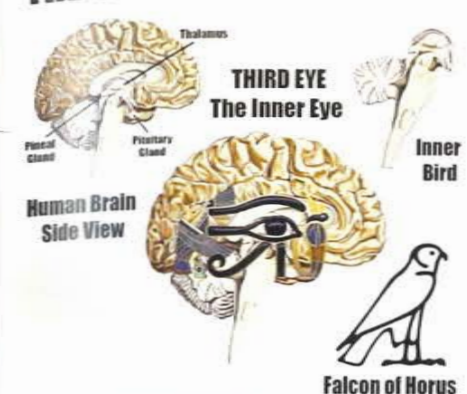
AS THE KUNDALINI ENERGY ASCENDS THROUGH SUSHUMNA, A SUBSTANTIAL INFLUX OF POTENT ENERGY REACHES THE BRAIN. THIS FLOW EXTENDS FROM THE RETICULAR ACTIVATING SYSTEM (RAS) AND THALAMUS TO THE CORTEX, SPARKING THE ACTIVATION OF DORMANT AND UNDERACTIVE REGIONS, PARTICULARLY IN THE FRONTAL LOBES. THE ENTIRE BRAIN SYNCHRONIZES, PULSATING COHESIVELY AND GENERATING CONSISTENT, HIGH-AMPLITUDE BRAIN WAVES ACROSS VARIOUS FREQUENCY BANDS. WHILE THE PEAK AMPLITUDE OFTEN RESIDES IN THE ALPHA BAND, HEIGHTENED ACTIVITY IS NOTABLY PRONOUNCED IN THE FRONTAL AREA, WITH INCREASED FAST EEG ACTIVITY IN THE BETA AND GAMMA BANDS.

ALCOHOL

ALCOHOL COMES FROM THE ARABIC TERM "AL-KUHL" AND "AL-GAWL" WHICH MEANS "BODY EATING SPIRIT." PERHAPS THIS IS WHY ALCOHOLIC DRINKS ARE CALLED "SPIRITS" AND "BOO-ZE." DRINKING ALCOHOL IS ONE OF THE FASTEST THINGS YOU CAN DO TO LOWER YOUR VIBRATION, AS IT'S BEEN USED AS A TOOL TO KEEP HUMAN CONSCIOUSNESS AT A LOWERED STATE FOR THOUSANDS OF YEARS.

SPIRITS=ASTRAL ENTITY
GIN=ASTRAL ENTITIY

THE EYE OF HORUS/FALCON



EYE OF HORUS



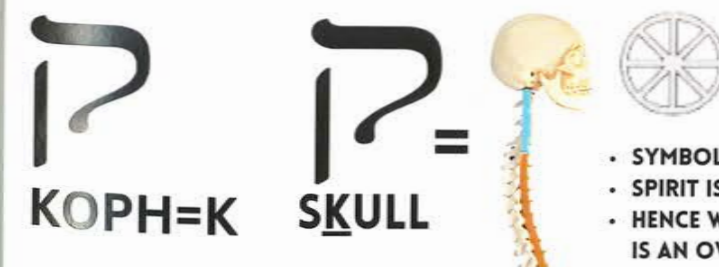
- 1/2 = Smell
- 1/4 = Sight
- 1/8 = Thought
- 1/16 = Hearing
- 1/32 = Taste
- 1/64 = Touch

CONSCIOUSNESS

THE BODY DOES NOT LIVE. IT IS ONLY MAINTAINED BY THE SPIRIT/CONSCIOUSNESS WITHIN. JESUS SAID, "MAN WILL NEVER SEE DEATH, FOR THERE IS NO DEATH TO SEE OR KNOW." THE BODY MANIFESTS THE SPIRIT; THAT WHICH WE THINK OF AND WILL TO DO MANIFESTS THE BODY TO DO SO. ACTIONS OF THE BODY ARE UNDER THE COMMAND OF THE CENTERING SOUL. THE BODY IS AN ELECTRICAL MACHINE THAT TAKES COMMANDS FROM THE OMNIPOTENT COSMIC INTELLIGENCE.

TO THINK IS TO CREATE. WE CREATE WITH LIGHT; NOTHING IS NOT LIGHT. THE FORM IS BORN IN THE IMAGE OF THINKING. I ALONE EXIST; I AM THE ALL.

MAN IS THE ONLY UNIT OF CREATION THAT IS SELF-AWARE OF THE COSMIC LIGHT WITHIN HIM. ALL ELSE ARE ELECTRICALLY ACTING BASED UPON INSTINCT.



- SYMBOL FOR SPIRIT
- SPIRIT IS IN THE HEAD
- HENCE WHY THE HEAD IS AN OVAL/CIRCLE

22 HEBREW LETTERS=22 BONES IN THE SKULL

כ	י	ט	ח	ז	ו	ה	ד	ג	ב	א
chaf / kof	yod	tet	chet	zayin	vav	hey	dalet	gimmel	vet / bet	alef
ch / k	y	t	ch	z	v	h	d	g	v / b	(silent)
ת	ש	ר	ק	צ	פ	ע	ס	נ	מ	ל
tav	shin	resh	koof	tzade	fey / pey	ayin	samech	nun	mem	lamed
t	s / sh	r	k	tz	f / p	(silent)	s	n	m	l

MERKABA

CELESTIAL SPHERE TO PORTRAY DIFFERENT PLANES OF REALITY

MER=LIGHT
KA=SPIRIT
BA=BODY



VEHICLE OF ASCENSION

NEUTRALIZING THE DUALITY OF SELF BY COMBINING THE UPPER AND LOWER SELF. YOU ARE A SOUL THAT EXPERIENCES DIFFERENT REALITIES WITHIN THE MULTI-VERSE. IN EACH PLANE YOU TAKE ON DIFFERENT BODIES. YOUR AIM IS TO BECOME A MULTI-DIMENSIONAL CREATURE AND NOT TO BE BOUND TO JUST ONE REALITY.

MENTAL
ASTRAL
ETHERIC
PHYSICAL

devil
|X|
dveil

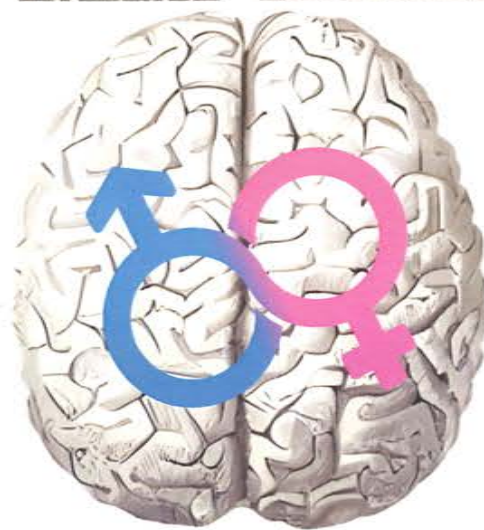
THE DEVIL IS ACTUALLY YOU DE-VEILING YOURSELF INTO THE LOWER PLANES OF EXISTENCE BY IGNORANCE OF TRUTH AND KNOWLEDGE. WHEN YOU DIE UNDER A FALSE IDENTITY OF SELF YOU HAVE NOW ADDED ANOTHER VEIL ON TOP OF YOUR TRUE SOUL SELF.

CORINTHIANS 3:16-17
16 KNOW YE NOT THAT YE ARE THE TEMPLE OF GOD, AND THAT THE SPIRIT OF GOD DWELLETH IN YOU?
17 IF ANY MAN DEFILE THE TEMPLE OF GOD, HIM SHALL GOD DESTROY; FOR THE TEMPLE OF GOD IS HOLY, WHICH TEMPLE YE ARE.

PSALM 82:6
I HAVE SAID, YE ARE GODS; AND ALL OF YOU ARE CHILDREN OF THE MOST HIGH.

LEFT HEMISPHERE RIGHT HEMISPHERE

SCIENTIST
CONTROLS RIGHT SIDE OF THE BODY
LANGUAGE
THE PLACE OF THE EGO
LOGICAL THINKING
SEQUENCING
FACTS
MATERIALISTIC
LETTERS
ANALYTIC
PERCEIVES REALITY IN USEFULNESS
DETAILS



ARTIST
CONTROLS LEFT SIDE OF THE BODY
CREATIVITY
HOLISTIC PERCEPTION
UNIFICATION
NON VERBAL CUES
INTUITION
FEELINGS
VISUALIZATION
PATTERNS
SPEECHLESS
METAPHORES
SYMBOLS
ACCEPTS REALITY AS IT IS
CONTEXT

BOTH HEMISPHERES PARTICIPATE AND CONTRIBUTE TO ALL ACTIVITIES; HOWEVER, THEY DO THE ACTIVITY IN DIFFERENT WAYS. IN OTHER WORDS, BOTH BRAINS CARRY OUT THE SAME FUNCTIONS BUT FUNCTION IN TWO DISTINCT AND DIFFERENT WAYS. BOTH BRAINS HAVE SEPARATE VIEWS AND PERCEPTION OF THE WORLD.

THE RIGHT BRAIN PRESENTS REALITY AS A UNIFIED WHOLE, WHICH EXPLAINS WHY THE PEOPLE IN POWER HAVE SPLIT UP ALL THE FIELDS OF KNOWLEDGE INTO DIFFERENT CATEGORIES WHEN IT IS ALL ACTUALLY ONE UNIFIED SCIENCE, WHICH IS DONE INTENTIONALLY TO KEEP US LEFT-BRAIN DOMINANT. ALL THINGS COME FROM THE ONE THEREFORE ALL IS ONE. THIS IS WHY THE EGYPTIANS STATED "ALL IS ATUM," MEANING ALL IS ATOM, THE TORUS FIELD. FOR EXAMPLE, THE RIGHT BRAIN WOULD SEE A JUNGLE AS A UNIFIED ENTITY, BUT THE LEFT BRAIN WILL SEE THE JUNGLE TREES AS SEPARATE BEINGS.

THE LEFT BRAIN'S PURPOSE IS TO ANALYZE AND BREAK DOWN THE UNIFIED WHOLE PRESENTED BY THE RIGHT BRAIN. THIS PROCESS IS DONE BY THE LEFT HEMISPHERE SO THAT WE CAN HAVE DISTINCT SINGULAR FRAGMENTS OF REALITY SO THAT IT CAN MANIPULATE, MANAGE AND CONTROL IT. BOTH HEMISPHERES ARE NEEDED FOR US TO FUNCTION WITHIN THIS CREATION; HOWEVER, WE MUST BALANCE THESE TWO ASPECTS OF THE BRAIN SO THAT WE DON'T BECOME LEFT OR RIGHT-BRAIN DOMINANT.

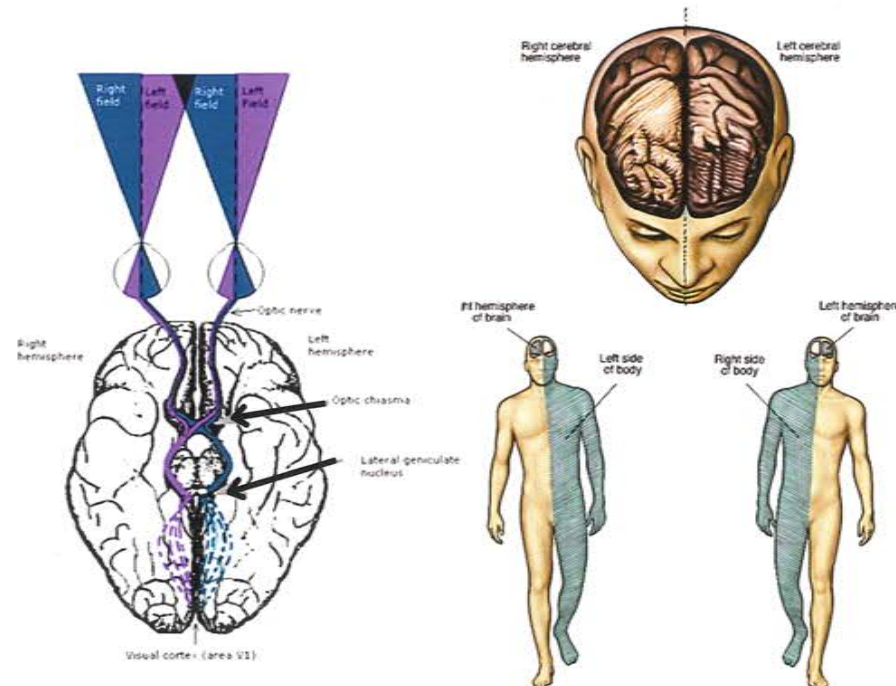
THE LEFT BRAIN MAINTAINS A SENSE OF DETACHMENT FROM THE DIRECT EXPERIENCE TO EXERT CONTROL OVER IT, WHILE THE RIGHT BRAIN STAYS IN THE PRESENT MOMENT AND WHOLEHEARTEDLY EXPERIENCES IT. THE RIGHT BRAIN RELIES ON THE LEFT BRAIN BECAUSE ITS HOLISTIC PERCEPTION WHILE CAPTURING THE ESSENCE OF THE WHOLE MAY LACK PRECISION AND CLARITY. THE LEFT BRAIN REQUIRES THE RIGHT BRAIN BECAUSE ALTHOUGH IT PRODUCES MENTAL CLARITY, IT CAN LOSE SITE OF THE CONNECTION BETWEEN ALL THINGS AND TRAP THE INDIVIDUAL IN A FRAGMENTED WORLDVIEW.

JOHN 21:6

"CAST THE NET ON THE RIGHT-HAND SIDE OF THE BOAT, AND YOU WILL FIND FISH."
MOVE INTO THE RIGHT HEMISPHERE OF THE BRAIN AND YOU WILL FIND GOD/ UNIFICATION/ HIGHERSELF.

MARK 16:19

"SO THEN AFTER THE LORD HAD SPOKEN UNTO THEM, HE WAS RECEIVED UP INTO HEAVEN, AND SAT ON THE RIGHT HAND OF GOD"
RIGHT HAND OF GOD IS THE RIGHT HEMISPHERE. HEAD IS HEAVEN, SAME ROOT WORD=HEA



- Reptilian Brain
- Limbic System
- Neocortex

- REPTILIAN=INSTINCTUAL
- LIMBIC=EMOTIONAL
- NEOCORTEX=CRITICAL THINKING

NEO FROM THE MATRIX WOKE UP AND STARTED TO USE HIS HIGHER, CRITICAL THINKING MIND WHICH IS THE NEO CORTEX



Earth



Water



Fire



Air



Ether

THE BASE OF ALL PHYSICAL MATTER IS THE EATHER, ALSO KNOWN AS SPIRIT OR AETHER. IT IS A SUBSTANCE THAT IS EVERYWHERE BUT NOWHERE AT THE SAME TIME. IT HAS ONE FOOT IN THE PHYSICAL WORLD AND IN THE ASTRAL PLANE, IT'S ON EITHER SIDE. THE WORD ETHER IS EITHER.

THE ETHER IS INFINITE POTENTIAL THAT CONSTANTLY MANIFESTS AND UNMANIFESTS ITSELF CYCLICALLY. THE AETHER IS THE HIDDEN ENERGY THAT VIBRATES TO CREATE THE "PHYSICAL WORLD WE SEE AND KNOW. WE ARE LIKE FISHES IN AN OCEAN, SURROUNDED BY AN ENERGETIC FLUID SUBSTANCE THAT WE CAN SEE OR TOUCH. ALL THINGS ARE FEEDING OFF THE ENERGY OF THE INFINITE ETHER.

THE 4 ELEMENTS ARE THE 4 VIBRATIONAL STATES OF THE ETHER.

-NONE OF THE ELEMENTS ARE PURE; THEY ARE COMPOSED OF EACH OTHER BY TRANSMUTATION.

-ALL OF THE ELEMENTS ARE BORN FROM THE 1ST ELEMENT ETHER (SPIRIT).

-THE 4 PHYSICAL ELEMENTS ARE THE 4 VIBRATIONAL STATES OF THE ETHER. EARTH HAS THE SLOWEST VIBRATION, AND FIRE IS THE QUICKEST.

-EACH ELEMENT SHARES ONE CHARACTERISTIC WITH THE ONE NEXT TO IT.

PLATOS ASPECT

FIRE=SHARPNESS, THINNESS, MOVEMENT
EARTH=DULLNESS, THICKNESS, REST
AIR=THINNESS, MOVEMENT, DULLNESS
WATER=DULLNESS, THICKNESS, MOVEMENT

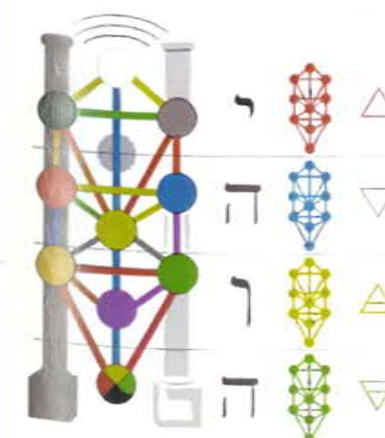
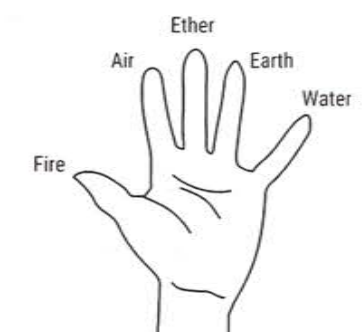
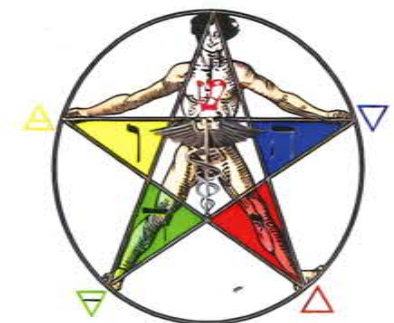
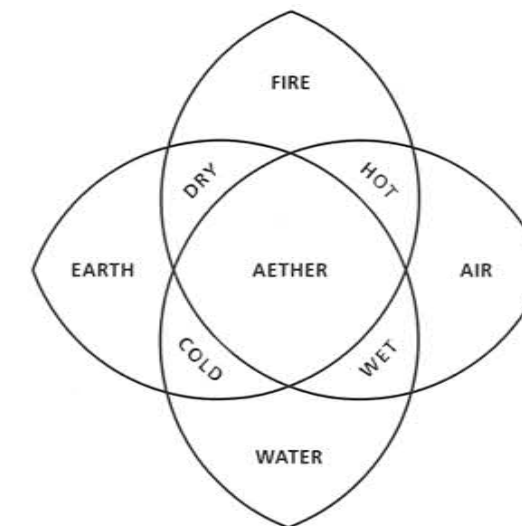
FEMALE MALE

WATER
EARTH

FIRE
AIR

PASSIVE

ACTIVE



SPIRIT
FIRE=LIGHT
AIR=BREATH
WATER=LIQUID
EARTH=BOTTOM OF JAW

THE ELEMENTS ARE ALWAYS IN THIS ORDER BECAUSE IT STARTS WITH THE DENSEST (EARTH), THEN ON TOP OF THE EARTH LIES WATER, THEN ON TOP OF WATER IS THE AIR, AND ON TOP OF THE AIR IS FIRE (HEAT RISES), THEN ON TOP OF FIRE IS SPIRIT/ETHER.

Buy the PDF Version here

Buy the Paperback version here

This Book was only the Part 1, If you want the full book you will need to buy it on the links on the top.

Thank you for buying the book, it will help the author to continue his amazing work.

In Love We Trust.